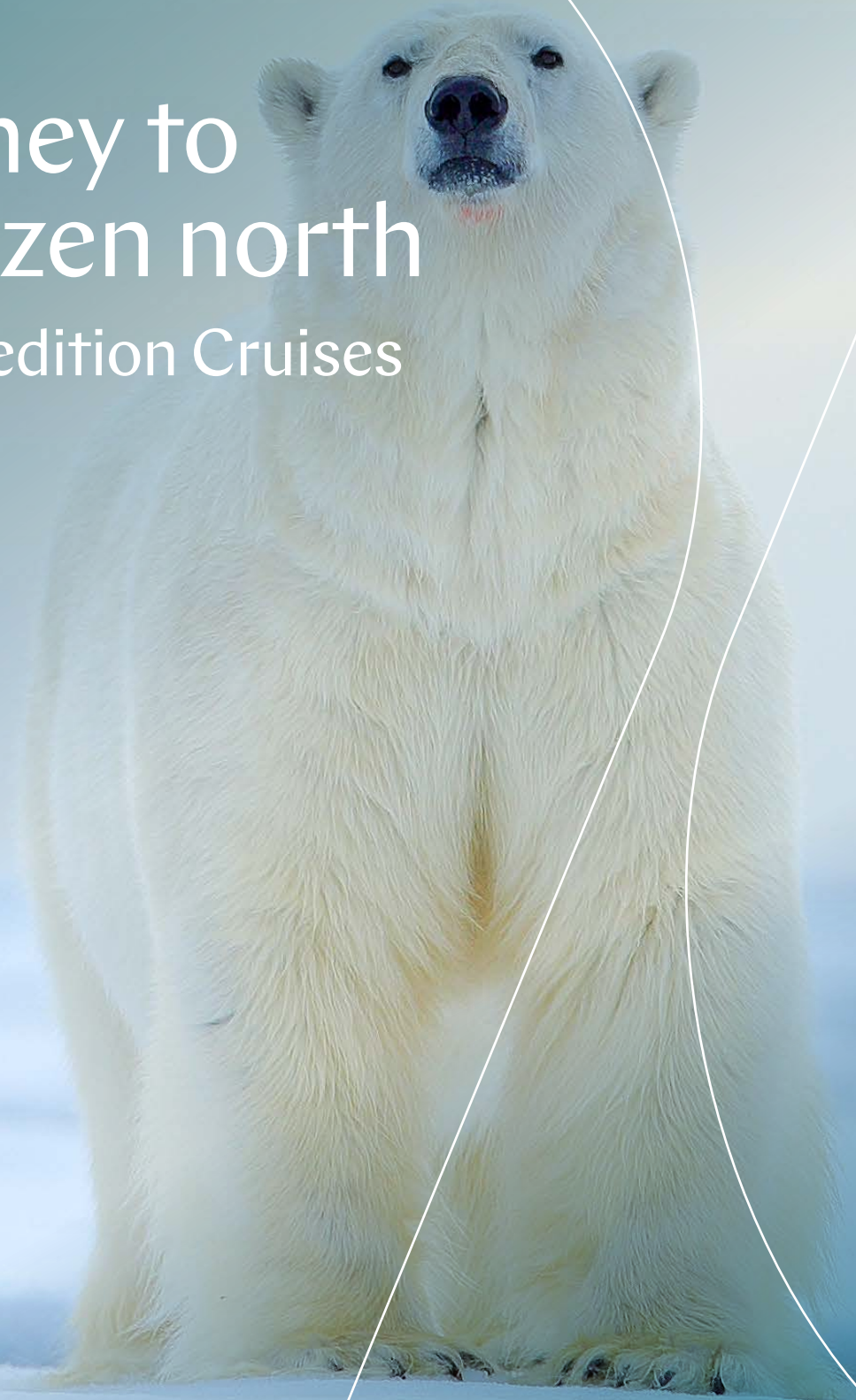


A journey to the frozen north

Arctic Expedition Cruises

2024



See what others don't

Some people see things as they are, others look further. Let us take you on a journey, that will change the way you see the world. Sail to some of the most incredible, remote destinations on the planet. When you travel with us, the wonders of the world take on a richer hue.

Over 70 years of cruise expertise

That's how long we've been navigating the world's waters. Swan Hellenic is built on a passion for exploration, a reputation for safety and professionalism of the highest standard.

Boutique ships

Just you and nature, that's how you'll feel on our 5 star contemporary Scandinavian inspired ships. With open-plan design, panoramic views and a focus on wellness, they're the perfect place to relax, recharge and explore.

Intuitive service

When it comes to anticipating your needs, no request is too big or too small. To us, personal and unobtrusive service means everything from making sure you're fully equipped for an Arctic excursion to remembering your favourite gin serve when it comes to pre-dinner drinks.

Enriching cultural expeditions

Once, we travelled to educate – professors, scientists, researchers. Over the years, we've developed a deep knowledge of the world. Today, we use this knowledge to create immersive cultural experiences that take you to the heart of a place.

The Swan's Nest, onboard SH Vega

A culture of care for people and planet

Swan Hellenic has always been passionate about our planet's rich environmental and cultural heritage. It's in our name and nature, and it's what inspires us to experience the world's wild unspoilt places and explore its rich and diverse cultures, ancient sites and civilisations.

Tribal dance event, Papua New Guinea



Equality, Diversity & Inclusion

Dynamically inclusive companies and societies are key to sustainable development. As the pioneer of cultural expedition cruising, we welcome adventurers of every age, gender, orientation, nationality and interest to explore worldwide. We promote gender equity and women and girls' empowerment worldwide, and have strong internal policies that ensure our employees enjoy equal opportunities of employment and professional development, irrespective of gender, ethnicity, culture, religion, age, sexual orientation, functional ability and political view.

Proud member of



Our focus areas

Swan Hellenic's sustainability policies are fully compliant with and exceed the cruise industry global standards governing its safety, environmental and labour aspects. In line with the UN sustainable development goals, we are focusing on the following 6 key areas.

Responsible Cruising

We are committed to preserving the beauty of the world we explore for future generations, taking urgent and innovative concrete action to reduce our environmental footprint.

Climate Action

Exploring the globe, we constantly encounter dramatic evidence of global warming and climate change. This strengthens our resolve to take urgent action - within our organisation and in the destinations we travel to - to combat their causes and mitigate their effects.

Life in the Water

With our strong seafaring heritage, we are committed to the responsible use of marine resources for sustainable development. This is vital in promoting and conserving the health and biodiversity of the Earth's waters.

Legacies of the Land

We strive to preserve the natural and cultural landmarks that our expedition cruises explore, promoting and advancing the conservation, restoration and sustainable use of terrestrial ecosystems and historic sites for future generations.

Thriving Communities

We build strong connections with the communities that host our cultural expedition cruises, respecting their cultural and environmental integrity, while partnering with them to generate positive impacts.

Quality Education

Education and research empower human potential. Proud of our roots in British academia, we work to support regional research initiatives, ensuring access to inclusive and equitable education and providing lifelong learning opportunities for all.

The spirit of adventure

Every Swan Hellenic sailing is an experience unto itself. Although we have an expertly designed programme for each cruise, we are always open to the unexpected. And the unexpected usually finds us.

Whether that's a migrating pod of whales feeding in an inlet that takes us slightly off course, a hungry polar bear devouring his first meal of the season on a lonely ice floe or an impromptu village celebration; these are the stories that are retold for generations.



Exploring with head and heart

Swan Hellenic pioneered cultural expedition cruising in 1954, when we accompanied members of the Hellenic Society around the famous sites of ancient Greece in the company of eminent classicists.

Fort Ross, Nunavut



Explore

Every Swan Hellenic cruise is the same today as it always was, combining geographical exploration with cultural and scientific discovery. We don't just take you to explore the most extraordinary places on earth. We bring you the company of like-minded people and renowned experts, who offer eye-opening lectures and are on hand for informal questions and discussion throughout your cruise.

Experience

So when you choose Swan Hellenic to see what others don't – you can be sure you'll do so with a full perspective and real insight into the history, cultures, wildlife, flora, geology and geography of the place. Briefings before each disembarkation and recaps afterwards supplement our lectures and talks, stimulating a relaxed social environment that encourages the sharing of experiences.



Enrich

At the same time, every Swan Hellenic cruise is also full of opportunities for you to develop your creative passions, with professionals on board to support you in photography and more. A library completes the picture, with a multitude of books on every subject, for you to take your interests to another level.

It's the depth of these other dimensions that's unique to Swan Hellenic, making us the first choice of adventurous minds worldwide.

Learn from the best

Renowned in their respective fields, our onboard experts have unparalleled knowledge of the regions we visit.

From historians to naturalists, meteorologists to ornithologists, our friendly experts will offer you incredible insight into the wildlife, history and geology of the places we visit. Tap into their expertise via our extensive lecture programme, or feel free to interact with them throughout your trip. On board our boutique ship, you're likely to grab a coffee with an expert, birdwatch on the deck alongside an accomplished ornithologist, or chat with them over dinner — they're more than happy to share their knowledge with you!



Hiking tour on the Greenland Icecap near Kangerlussuaq



Geologists

Everyone loves a beautiful landscape. But understanding its geology and how it was formed will change your perspective forever.



Photographers

Chat to our expert photographers and learn how to best capture movement and light in the extraordinary destinations we visit.



Historians

Our historians will enrich your expedition experience with incredible stories and unmatched knowledge of the places we visit.



Ornithologists

Will you be lucky enough to spot a snow petrel? Learn from our ornithologists and be inspired to identify the incredible birds you'll see.



Marine Biologists

As you encounter whales, dolphins and other marine species, you can consult our marine biologists for fascinating anecdotes.



Expedition Leaders

In charge of your excursions, these leaders will make sure you get the best opportunities to experience amazing wildlife and landscapes.



Activity Leaders

From kayaking excursions to hiking trips, you can count on our experienced activity leaders to guide you to remote, inaccessible destinations.



Naturalists

Charles Darwin may not be on board, but our experts will give you a new understanding of organisms, habitats and the natural world.



Botanists

Identify plant life at sea and on land with our expert botanists, and get insights into our ecosystems and climate.



Endless ways to spend your day

There's no such thing as a typical day with Swan Hellenic. We bring you endless possibilities to tailor every moment to your interests and mood, so you'll always have your dream day on board.

Plan your perfect day

6am

Waking comfortably refreshed in your stateroom, early risers can join the team on deck for an early morning breakfast. Breathe in the invigorating Arctic air as you sip your fresh tea or coffee. What a wonderful way to prepare for the ahead exploring this icy wilderness.



7am

Early risers have the time to take a fitness class or workout in our gym. Refuel with a light continental or substantial cooked breakfast - a perfect foundation for the action-packed day ahead.



8am

Get ready for another day of Arctic exploration. Today's adventures might include Zodiac cruising, kayaking through a new frozen world, searching for wildlife or perhaps disembarking and visiting one of the region's remote communities.

12pm

Back on board, you'll have the time to share experiences over lunch, whether snacking in the Club Lounge or savouring something a little more substantial in the Swan Restaurant or Pool Bar & Grill.



2pm

There may be time after lunch for another Zodiac cruise or on-shore activity. Come face to face with impossibly large glaciers and icebergs, sail through ice-choked waterways or learn about the incredible human and natural history that shaped these lands.



4pm

Indulge in our High Seas High Tea or retreat to the comfort of your stateroom for a movie on your flatscreen TV. Sweat it out in our stunning panoramic sauna, take a dip in the pool, take a mindfulness class, or pop to the salon for a relaxing treatment.



6.30pm

Each evening a member of our expert team or a guest lecturer will talk you through the day's highlights. We will then discuss the shore excursion plans for the following day.

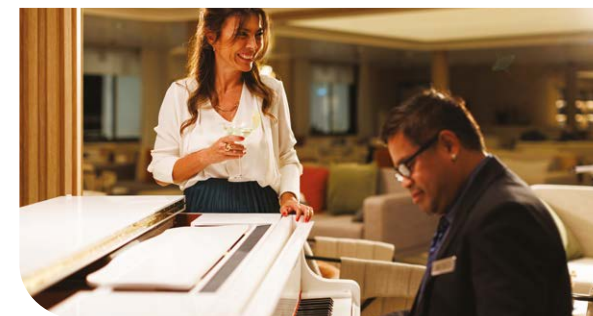
7pm

Time to enjoy the pleasures of elegant dining where our chefs have prepared international delights along with wines chosen by our sommelier.



9.30pm

End a perfect day with your favourite drink and a wonderful piano performance. Or head out to the deck for some stargazing under the clear night sky.



All-inclusive experience

We've taken care of the finer details, allowing you to focus your full attention on your cultural expedition cruise experience. Our cruise fares are all-inclusive, so there are no surprise extras or unexpected gratuity bills. Relax in the full knowledge that all you have to do is have a wonderful time.

- Return regional flights (for cruises starting or ending in Longyearbyen and Kangerlussuaq).
- Group transfer from the airport to the hotel the day before embarkation, from the hotel to the cruise port on embarkation day and from the cruise port to the airport on disembarkation day.
- One night pre-cruise accommodation with breakfast in a 4/5 star hotel or onboard.
- All meals onboard
- Onboard accommodation in a stateroom selected category
- 24-hour room service
- Coffee, tea, soft drinks and selected alcoholic beverages available 24-hours per day
- Lecture programmes by our experienced guest speakers
- One selected shore excursion per port of call
- Branded Swan Hellenic expedition parka and use of rubber boots in Polar Region
- Onboard gratuities & port taxes
- Selected expedition activities led by our expedition team

Enhance your experience

You also have the option of adding some extra special services to your cultural cruise experience (additional charges apply):

- Air fares (unless otherwise stated)
- Travel insurance
- Optional land programmes and hotel accommodation pre or post cruise
- Premium and private shore excursions
- Kayak and private Zodiac tours in the expedition areas
- Premium alcoholic beverages
- Spa & beauty treatments
- Laundry services
- Retail shop purchases
- Quick turnaround laundry service, allowing you to travel as light as you like



Svalbard: Earth's wildest outpost

Just 500 miles from the North Pole, the remote Svalbard archipelago is one of Europe's last great wildernesses. The largest island, Spitsbergen, is home to the northernmost settlement in the world – the rugged Longyearbyen.

Beyond the town, dramatic snowy peaks and enormous glaciers frame vast, seemingly endless tundra deserts and silent watery inlets choked with icebergs. For most of the year, Svalbard is a harsh and foreboding place where only the toughest forms of nature survive. Yet at the height of the Arctic summer, the sun glows through the night, wildflowers pop up across the tundra, and Svalbard comes to life.

The polar bear, often referred to as the King of the Arctic, reigns supreme in Svalbard, while walrus, reindeer, ringed seals, Arctic foxes, and seabirds are also present, as well as several whale species

🗺️ Itinerary	📍 From → To	🚢 Ship	📅 Night	🕒 Departure
High Arctic of Svalbard	Tromsø → Tromsø	SH Diana	10	20 June 2024
Arctic Islands & Fjords	Reykjavik → Longyearbyen	SH Vega	13	24 June 2024
High Arctic of Svalbard	Tromsø → Tromsø	SH Diana	10	30 June 2024
Svalbard Explored	Longyearbyen → Longyearbyen	SH Vega	7	7 July 2024
High Arctic of Svalbard	Tromsø → Tromsø	SH Diana	10	10 July 2024
Svalbard Explored	Longyearbyen → Longyearbyen	SH Vega	7	14 July 2024
Svalbard Explored	Longyearbyen → Longyearbyen	SH Vega	7	21 July 2024
Arctic Island Hopping	Longyearbyen → Reykjavik	SH Vega	13	28 July 2024



Arctic Fox, Svalbard



Witness the extraordinary calving of the tidewater **Monacobreen Glacier**, one of the largest glaciers in Spitsbergen.

Take in the vast icy wilderness of the barren **Arctic tundra** – one of the most fragile ecosystems on earth.

Visit some of Svalbard's **old trapper huts** for a glimpse into the harsh living conditions of the past. These huts date back to the 17th century and are an important part of Svalbard's cultural heritage.

Day	Visiting
1	Tromsø
2	Bear Island
3-8	Svalbard
9	Skarsvåg*
9	Cruising North Cape
10	Alta
11	Tromsø

High Arctic of Svalbard

📅 20 – 30 Jun | 30 Jun – 10 Jul | 10 Jul – 20 Jul 2024 🚢 SH Diana
 📍 Tromsø – Tromsø 📅 10 nights

Ports, port order and itinerary duration may vary, for the most up-to-date details see swanhellenic.com

* 28th June Day 9 Vessel will visit Honningsvåg in replacement of Skarsvåg.

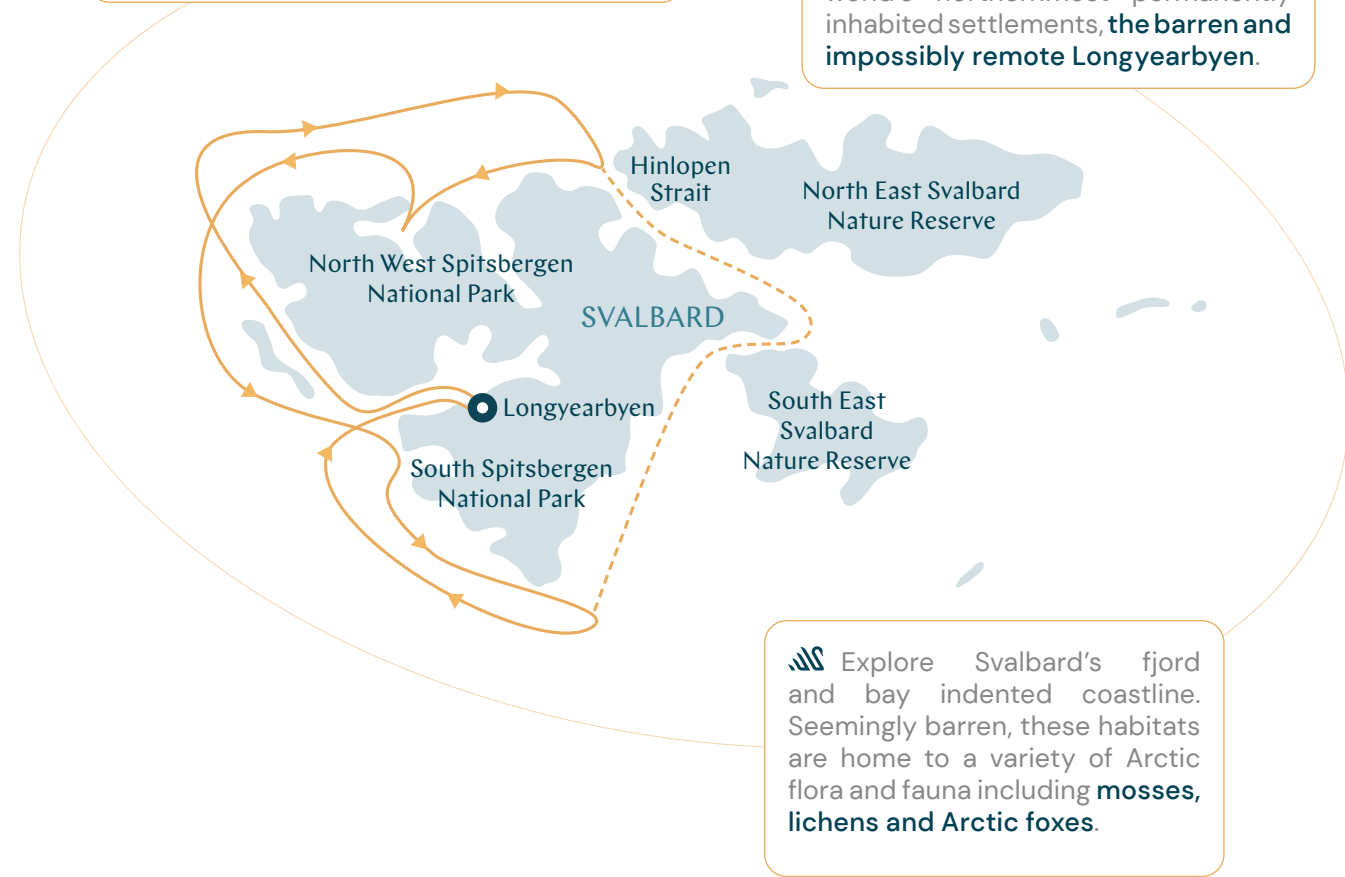


→ Starting from € 10,029 per person in double Oceanview Stateroom occupancy



Learn about Svalbard's unique and remarkable wildflowers. These beautiful plants have adapted to the tundra's low temperatures and short growing seasons with their compact forms and bright colours.

Experience life in one of the world's northernmost permanently inhabited settlements, the barren and impossibly remote Longyearbyen.



Explore Svalbard's fjord and bay indented coastline. Seemingly barren, these habitats are home to a variety of Arctic flora and fauna including mosses, lichens and Arctic foxes.

Day Visiting

- 1 Longyearbyen
- 2-7 Svalbard
- 8 Longyearbyen

Ports, port order and itinerary duration may vary, for the most up-to-date details see swanhellenic.com

Svalbard Explored

7 – 14 Jul | 14 – 21 Jul | 21 – 28 Jul 2024 SH Vega

Longyearbyen – Longyearbyen 7 nights

transfer airport/hotel

one night pre-cruise

transfer hotel/airport

regional flight

transfer airport/port

cruise

transfer port/airport

regional flight

Svalbard aerial view

→ Starting from € 11,138 per person in double Oceanview Stateroom occupancy



Jan Mayen

Explore the island **Jan Mayen**, uninhabited except for a small weather station. The highest point here is the Beerenberg volcano, which is 2,227 metres high and one of the North Atlantic's most active volcanoes.

Cruise through Iceland's **rugged western fjords** and look on in awe at their steep cliffs, deep valleys and spectacular waterfalls.

Navigate seas that are ice-choked for most of the year. This is when our boutique ice-breaker ship really goes to work – expedition cruising at its finest!



Arctic Islands and Fjords

📅 24 Jun – 7 Jul 2024 🚢 SH Vega
📍 Reykjavik – Longyearbyen 🗓️ 13 nights

Ports, port order and itinerary duration may vary, for the most up-to-date details see swanhellenic.com

Day	Visiting
1	Reykjavik
2	Isafjordur
2	Vigur Island
3	Grimsey Island
4	At Sea
5	Jan Mayen Island
6	At Sea
7-14	Svalbard
14	Longyearbyen

transfer airport/hotel | one night pre-cruise | transfer hotel/port | cruise | transfer port/airport | regional flight

Arctic Island Hopping

📅 28 Jul – 10 Aug 2024, 🚢 SH Vega
📍 Longyearbyen – Reykjavik 🗓️ 13 nights

Ports, port order and itinerary duration may vary, for the most up-to-date details see swanhellenic.com

Day	Visiting
1	Longyearbyen
1-8	Svalbard
9	At Sea
10	Jan Mayen Island
11	At Sea
12	Grimsey Island
13	Vigur Island
13	Isafjordur
14	Reykjavik

transfer airport/hotel | one night pre-cruise | transfer hotel/airport | regional flight | transfer airport/port | cruise | transfer port/airport

→ Starting from € 18,140 per person in double Oceanview Stateroom occupancy



Extraordinary Encounters



In Svalbard, polar bears are protected by law, and hunting them is illegal. However, given their large numbers and proximity to human settlements, polar bears are considered a threat to human safety, and strict regulations are in place to minimise conflicts between bears and humans. For example, anyone leaving the safety of a settlement must carry firearms at all times.

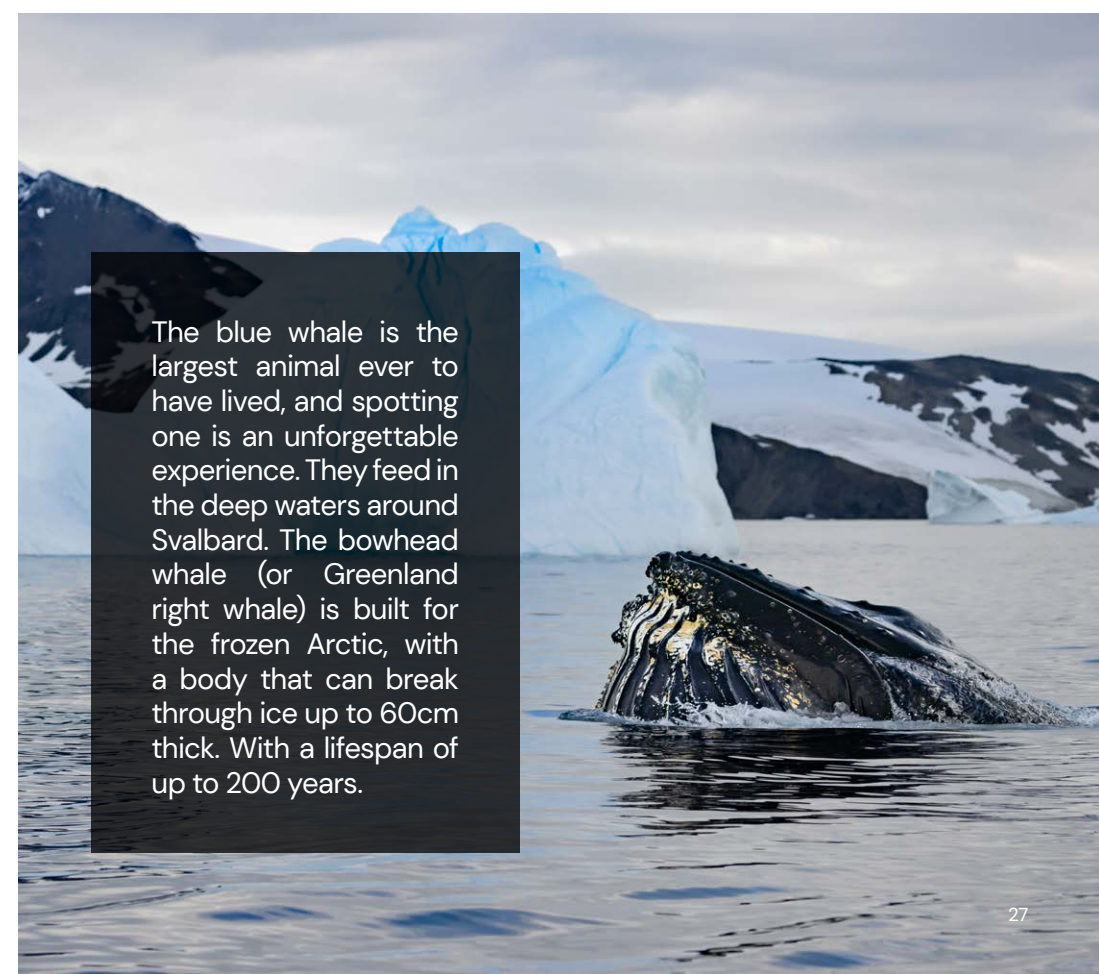
Whilst cruising Svalbard, you may come across the extraordinary sight of a large group (or herd) of walrus hauled on an ice floe or a sandy beach. These remarkable marine mammals are social animals and often gather in groups of hundreds. They are well known for their bulk and their distinctive tusks, which can grow up to one metre long in males. Walrus are also known for their intelligence and have been observed using tools such as rocks to open shellfish.

You might hear a herd of walrus before you see them – they are very vocal animals and can often be heard bellowing, grunting and whistling.

Walrus colony herd on the sand beach, Svalbard



Only the hardest birds have adapted to survive in Svalbard's harsh environment – and Arctic seabirds are the hardest of all. Kittiwake, guillemot and puffin are common sightings. Gulls are also common sightings in Svalbard – look out for the glaucous gull, black-legged kittiwake and common gull. Watch for Arctic tern flying over the tundra in summer months as they hunt for insects and small invertebrates, and you may also spot Arctic skua seeking larger quarry in the form of small mammals and birds.



The blue whale is the largest animal ever to have lived, and spotting one is an unforgettable experience. They feed in the deep waters around Svalbard. The bowhead whale (or Greenland right whale) is built for the frozen Arctic, with a body that can break through ice up to 60cm thick. With a lifespan of up to 200 years.



Zodiac cruising

Live it!

Zodiac safari Svalbard

In the company of renowned polar experts, set off on our water-level Zodiac boats on an exploration of Svalbard's inlets, bays and fjords on the lookout for the resilient wildlife that calls this frozen world home. We might see a lonely polar bear wandering along the shore searching for a meal or hear the bellowing of a hundred walrus in the distance. Ringed seals bask on the ice, and pods of whales swim in the abundant waters below. In the cliffs above, thousands of majestic seabirds, including guillemots, razorbills, little auks, fulmars and gulls, chatter, nest, feed and take care of their young

Included

Wilderness walk Svalbard

Svalbard summers may be short, but they're also magnificent. During these months, the eternal sun casts a magical glow over the other-worldly glacial landscapes and tundra fields. This is also when the fragile Arctic wildflowers come into their short but glorious blooming season. Summer is when Svalbard comes to life. Join your experienced polar guide on a fascinating walk through this incredible world, observing flora and fauna along the way. We'll also connect with the polar explorers of the past as we visit the preserved trapper huts of the intrepid adventurers that came before us

Included

Stepping Out



The legends of the Arctic

Synonymous with uncharted discovery, the vast and wild Arctic has fascinated adventurers, scientists and explorers for decades.

Natural wonders range from the impossibly large icebergs of Ilulissat Ice Fjord in Greenland and the vast ice sheets and bubbling lava flows of Iceland to The Canadian Arctic, home to the elusive narwhal and to museums and memorials telling the stories of the explorers who failed and succeeded in crossing the infamous Northwest Passage.

Across the Arctic, you'll find seals, walruses, reindeer, Arctic foxes, numerous whale species, a host of birdlife and, of course, the mighty polar bear.

Itinerary	From → To	Ship	Night	Departure
Southern Greenland Discovery	Halifax → Reykjavik	SH Diana	11	21 May 2024
Iceland in Depth	Reykjavik → Reykjavik	SH Diana	8	1 Jun 2024
Discovery of Arctic	Reykjavik → Tromso	SH Diana	11	9 Jun 2024
Iceland in Depth	Reykjavik → Reykjavik	SH Vega	8	16 Jun 2024
Sailing with the Vikings	Tromso → Amsterdam	SH Diana	12	20 Jul 2024
Iceland in Depth	Reykjavik → Reykjavik	SH Vega	8	10 Aug 2024
Island Hearts of the Arctic	Reykjavik → Reykjavik	SH Vega	12	18 Aug 2024
Greenland in-depth	Reykjavik → Kangerlussuaq	SH Vega	10	30 Aug 2024
Voyage to the Northwest Passage	Kangerlussuaq → Kangerlussuaq	SH Vega	16	9 Sep 2024
Greenland to Nova Scotia	Kangerlussuaq → Halifax	SH Vega	15	25 Sep 2024

Southern Greenland Discovery

🕒 21 May – 1 Jun 2024 🏠 SH Diana
📍 Halifax – Reykjavik 📅 11 nights

Embark on an unforgettable journey through the dramatic landscapes of the North Atlantic on this 11-night expedition cruise. Begin in Canada's charming maritime region, sailing from vibrant Halifax to Saint John's and historic L'Anse-aux-Meadows. Next, we'll discover Greenland's traditional ways of life and striking landscapes, visiting the picturesque towns of Qaqortoq, Narsarsuaq, and Aappilattoq — marvel at the raw beauty of Prins Christian Sund and Skjoldungen's icy wilderness. Finally, relax at sea before experiencing Iceland's iconic contrasting landscapes – the beautiful and historical Westfjords region and sleek, modern Reykjavik.



Herring Gull, Seydisfjörður

5 Unmissables

- Discover L'Anse aux Meadows, the only authenticated Viking site in the Americas, where Leif Erikson, the first European to explore Canada's east coast, resided around 1021.
- Explore Kujataa in Greenland, and witness the innovative Norse and Inuit farming practices that sustained them in this harsh Arctic environment at the edge of an ice cap.
- Marvel at the raw power and beauty of the majestic Greenland Ice Sheet and explore the icy landscape with its towering glaciers.
- Keep your eyes peeled for muskox, polar bear, and bearded seal while exploring the pristine landscapes of Greenland.
- Experience Aappilattoq, a colourful village on Prince Christian Sound, where the Inuit harmoniously coexist with their rugged surroundings.

Day	Visiting
1	Halifax
2	At Sea
3	Saint-John's, NL
4	L'Anse-aux-Meadows, NL
5	At Sea
6	Qaqortoq
7	Narsarsuaq
8	Aappilattoq
8	Cruising Prins Christian Sund
9	Skjoldungen
10	At Sea
11	Patreksfjörður
11	Reykjavik

Ports, port order and itinerary duration may vary, for the most up-to-date details see swanhellenic.com



KAYAK
The word "kayak" has its roots in Greenlandic, meaning "hunter's boat."

VIKINGS
Erik the Red, a famed 11th-century Norse explorer, settled the first Vikings in South Greenland's Kujataa.

→ Starting from € 10,258 per person in double Oceanview Stateroom occupancy



NOTE: The July 29th departure operates in reverse order

Iceland in Depth

📅 1 – 9 Jun 2024 🏠 SH Diana
 📅 16 – 24 Jun 2024 | 10 – 18 Aug 2024 🏠 SH Vega
 📍 Reykjavik – Reykjavik 🗓️ 8 nights

Experience the wild and fantastic landscapes of Iceland – the land of fire and ice. Circumnavigate the geologically active island, looking out for majestic whales, to see the puffin capital of the world. Along the way, we will discover the phenomena of fjords, spectacular waterfalls and never-ending volcanic scenery. Discover Iceland’s oldest houses and meet locals who are proud of their traditional heritage such as fishing or eiderdown making. Hike to thundering waterfalls, duck under the spray of spouting hot geysers, spot Atlantic puffins and trek across harsh landscapes.



Cute sheep in Iceland

5 Unmissables

- 🏔️ Embrace Iceland’s fiery spirit as you explore its **volcanic landscapes**. Learn about the devastating eruptions of the past and watch bubbling lava flow from the county’s active volcanoes.
- 🏔️ In contrast is the whites and blues of the deep glacier waters, thundering waterfalls, enormous glaciers and **majestic icecaps**.
- 🏔️ Listen to the thunderous roar of **Dynjandi waterfall** and cruise along remote fjords.
- 🏔️ Cross into the Arctic Circle on **Grimsey Island** – the northernmost inhabited point in Iceland.
- 🏔️ Take some time to explore cosmopolitan **Reykjavík**. This compact yet quirky city is home to a fantastic foodie scene, eye-catching architecture and an impressive collection of museums and art galleries.



ELFISH AFFAIRS

Many Icelanders still believe in the existence of elves (known as Huldafólk, or ‘hidden people’) – and when construction takes place on certain areas of land, a spokesperson is allocated for the elves.



POLITICAL TRAILBLAZERS

Iceland is one of the oldest democracies in the world and has the oldest parliament in the world that’s still in existence

Day	Visiting
1	Reykjavik
2	Dynjandi Waterfall
3	Isafjordur
4	Grimsey Island
4	Hrisey Island
4-5	Akureyri
6	Seydisfjordur
7	Djupivogur
8	Heimaey
9	Reykjavik

Ports, port order and itinerary duration may vary, for the most up-to-date details see swanhellenic.com



→ Starting from € 9,864 per person in double Oceanview Stateroom occupancy



Hofn Glacier, Iceland



Humpback whales, Kaldfjord area, northern Norway

Extraordinary Encounters



Since the first settlers arrived in the late 9th century, Iceland's whales have been integral to the country's economy, culture, and in the early days, survival. Whaling in Iceland remained big business until the beginning of the 21st century. Thankfully, the appetite for whale meat has since waned and Icelanders are more interested in observing and studying these ocean giants from afar. Iceland is now regarded as one of the best places in the world for whale watching.

Minke whales are the most commonly sighted whales in Iceland, and many live in the waters year-round. Acrobatic humpback whales, playful white-beaked dolphins and shy harbour porpoises can also be seen during the summer months. Iceland's orcas are transient, so their whereabouts is usually unknown, making them more difficult to spot, but you may get lucky, especially around the Snæfellsnes Peninsula and East Fjords regions.



Grimsey Island

Live it!

Akureyri & Goðafoss Waterfall Akureyri, Iceland

From Akureyri, we'll travel to the spectacular Godafoss waterfall - striking to observe and steeped in fascinating Nordic history. It was here in 1000AD that Thorgeir of Ljosavatn, a prominent Norse priest, decided that Christianity would become the official Norse religion. He subsequently threw all of the statues of the pagan gods into the waterfall. Hence the waterfall was named Godafoss (Waterfall of the Gods). Returning to Akureyri, we'll continue with a short tour of the pretty town before stopping at the Botanical Gardens, famed for its 2,000 species of local and exotic plants and flowers.

Included

Jökulsárlón Glacier Lagoon Cruise & Scenic Drive Djúpivogur, Iceland

We'll travel along southeast Iceland's striking coastline as we make our way to the beautiful Jökulsárlón Glacier Lagoon. The lagoon is regarded as one of Iceland's most incredible natural wonders and has appeared in several movies, including Tomb Raider, Batman Begins and several James Bond films. Icebergs calve from the nearby Breiðamerkurjökull and Vatnajökul glaciers, creating an impressive mosaic of black, blue and white ice. Get a close-range view of these stunning giants on a cruise on the lagoon before heading to the charming village of Höfn

Optional

Stepping Out  
Zodiac Kayaking

Discovery of Arctic

9 Jun – 20 Jun 2024 SH Diana

Reykjavik – Tromsø 11 nights

Experience the wild and fantastic landscapes of Iceland, Jan Mayen and Svalbard on our luxury boutique ship. Circumnavigate the land of fire and ice, visiting nesting puffin colonies along the way. Discover the phenomena of fjords, spectacular waterfalls and never-ending volcanic scenery. Explore the remote shores of Jan Mayen Island on a nature walk to the island's only dwelling, the metrological station. Travel through the enchanting sound of Bellsund before exploring the islets and islands of Spitsbergen. Seabirds fill the rocky cliffs and shorelines here. Reindeer, seals and walrus are plentiful. And of course, the mighty polar bear is king in this unforgiving corner of the world.



5 Unmissables

Discover Reykjavik's **vibrant cultural scene** with its various museums, galleries and world-renowned eateries.

Cruise through Iceland's **rugged western fjords** and look on in awe at their steep cliffs, deep valleys and spectacular waterfalls.

Stop in at **Ittoqqortoormiit** – one of the world's most remote and isolated settlements. For nine months of the year, sea ice prevents ship access to the town, and locals must depend on their hunting skills for survival.

Explore the island **Jan Mayen**, uninhabited except for a small weather station. The highest point here is the Beerenberg volcano, which is 2,227 metres high and one of the North Atlantic's most active volcanoes.

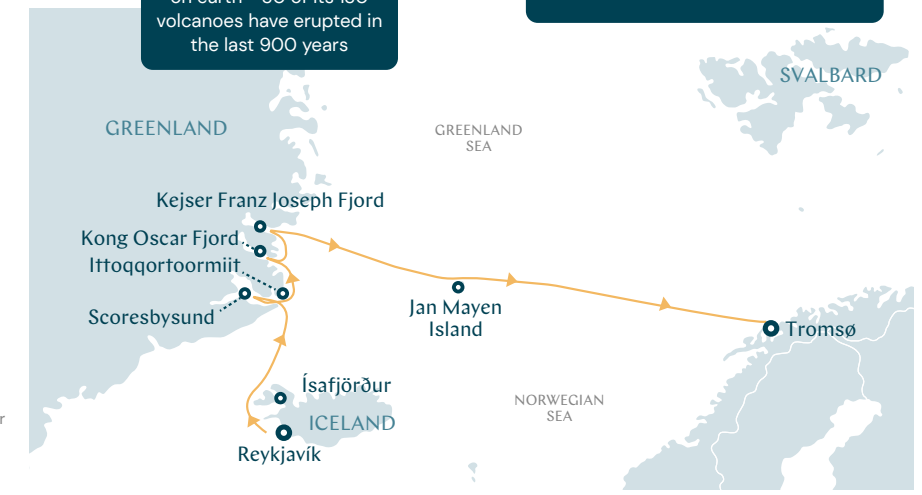
Take in the vast icy wilderness of the barren **Arctic tundra** – one of the most fragile ecosystems on earth.

Day	Visiting
1	Reykjavik
2	Isafjordur
3	At Sea
4	Ittoqqortoormiit
5-6	Scoresbysund
7	Kong Oscar Fjord
8	Kejser Franz Joseph Fjord
9	At Sea
10	Jan Mayen Island
11	At Sea
12	Tromso

Ports, port order and itinerary duration may vary, for the most up-to-date details see swanhellenic.com

GEOLOGY IN ACTION
Iceland is one of the most geologically active places on earth – 30 of its 130 volcanoes have erupted in the last 900 years

LET'S TALK
The Inuit language of Kalaallisut is an official language of Greenland, alongside Danish



Starting from € 11,693 per person in double Oceanview Stateroom occupancy



At Sea, Glacier

Sailing with the Vikings

📅 20 Jul – 1 Aug 2024 🏠 SH Diana
 📍 Tromsø – Amsterdam 📅 12 nights

Cruise through spectacular scenery on this unforgettable voyage as our expedition ship visits the places it was built to explore, slipping into tiny harbours and iconic fjords from Norway's longest to one of the narrowest that a ship can navigate. We head south from Tromsø enjoying long days and the soft glow of the midnight sun. We'll sail the Lofoten Islands, along tiny channels, past mighty glaciers, around rugged headlands, snaking through emerald-green fjords. As we arrive in Amsterdam, you'll have experienced some of Norway's wildest and unspoilt scenery.



Tromsø harbour at sunset, Norway

5 Unmissables

🌊 So many fjords, each more breathtaking than the last. From the vast Atlantic Ocean, you'll sail through two of Norway's longest fjords and into its mountainous interior. You'll also cruise along the World Heritage Listed **Geirangerfjord** in pursuit of the mighty Brikisdal Glacier.

🌊 Visit the preserved **medieval stave churches** that are still present in some of the coastal towns. Most of these wooden churches were built between 1150 and 1350.

🌊 Cross into the **Arctic Circle** as you make your way to the Arctic town of Tromsø – a real bucket list achievement.

🌊 Cruise through the famously narrow and steep **Trollfjorden** and look up in awe at the steep mountainsides – you can almost reach out and touch them from the ship.

🌊 Stop in at Tromsø's **Polar Museum**. The museum tells the stories of brave trappers (men and women) who survived impossible winters in this hostile place.

Day	Visiting
1	Tromsø
2	Trollfjorden
2	Leknes, Lofoten
3	Bronnoysund
4	Molde
5	Geiranger
6-7	Shetland Islands
8-9	Leith (Edinburgh)
10	Aberdeen
11	Newcastle upon Tyne
12	The Hague-Scheveningen
13	Amsterdam

WARNING, TROLLS!
Trolls are featured heavily in Norse mythology and are said to live in isolated rocks and caves of the fjords. You can even find some mountain pass signs warning visitors not to upset the trolls

WARMER CLIMES
Thanks to the Gulf Stream, the Norwegian fjords are warmer than you might expect. The waters remain mostly ice-free

Ports, port order and itinerary duration may vary, for the most up-to-date details see swanhellenic.com

➔ Starting from € 10,372 per person in double Oceanview Stateroom occupancy



Sunnlyvsfjorden, Geiranger village



King Eider flying above a lake

Extraordinary Encounters

On the island of Lånan, the eider duck is king. Located in the Vega Archipelago, halfway along Norway's coastline, it's all about the eider ducks here. The islanders who help look after the birds relocate to Lånan between April and July to carry out maintenance tasks and prepare for the arrival of the nesting ducks. They prepare nests from seaweed and do all that they can to ensure a successful nesting season.

Once the ducks have arrived and the eggs have been laid, their keepers will patrol the area for predators like mink, otters and crows. In June, the hatchlings will appear, and the mother and ducklings will leave a few weeks later. And then it's time to collect the harvest – the precious eiderdown. This symbiotic relationship that the islanders have with the ducks is a cultural heritage that has existed for generations and one that they are proud to continue.



Hiking, Norway

Live it!

Discover the Norwegian Aquaculture Centre Bronnoysund | Norway

Discover the history of the Norwegian fish farming industry on a fascinating tour of the Norwegian Aquaculture Centre in Toft. Get an insight into modern aquaculture and learn how technology is used to transform a salmon, from egg to fish. There's even an opportunity to feed the fish, and try an underwater camera to see them up close.

Included

Kayaking the Geirangerfjord Geirangerfjord | Norway

Embark on a scenic tour of Geirangerfjord by kayak on this optional tour. Glide through pristine waters, catch a glimpse of the Seven Sisters waterfalls, and learn about the fjord's natural wonders from your guide on a gentle adventure that will stay with you forever.

Optional

Stepping Out



Zodiac



Kayaking

Island Hearts of the Arctic

18 – 30 Aug 2024 SH Vega
 Reykjavik – Reykjavik 12 nights

Discover two of the planet's last true wilderness areas on this unforgettable polar expedition. Begin with an exploration of Iceland's untamed Westfjords region before crossing the Denmark Strait into Scoresbysund, Greenland's vast fjord system – the largest in the world. Take in the dramatic, unspoiled landscapes and experience Inuit culture at Ittoqqortoormiit, one of the most remote towns in the world.

Returning to Iceland, explore East Iceland's small villages and dramatic coastlines. And further south, learn about Heimaey Island's dramatic history. Finish up in cosmopolitan Reykjavik, reflecting on your Arctic odyssey as you explore the city's fabulous foodie scene and cultural delights.



Maniitsoq

Day	Visiting
1	Reykjavik
2	Isafjordur
3	At Sea
4	Ittoqqortoormiit
5-6	Scoresbysund
7-8	Kong Oscar Fjord
9	At Sea
10	Seydisfjordur
11	Djupivogur
12	Heimaey
13	Reykjavik

Ports, port order and itinerary duration may vary, for the most up-to-date details see swanhellenic.com



5 Unmissables

Navigate the largest fjord system in the world in Greenland's **Scoresby Sund**. The fjords here reach depths of up to 1,450 metres (4,700 feet) and are home to seals, narwhals, polar bears, muskoxen, geese and seabirds.

Stop in at **Ittoqqortoormiit** – one of the world's most remote and isolated settlements. For nine months of the year, sea ice prevents ship access to the town, and locals must depend on their hunting skills for survival.

Travel to **Jökulsárlón Glacier Lagoon** through incredible coastal scenery. The lagoon is one of Iceland's most picturesque spots – here, we'll sail amongst the stunning azure icebergs as they slowly drift out to sea.

Visit the **Skalanes Reserve** and its diverse range of habitats and wildlife. Thousands of seabirds nest along the dramatic cliffs, while prized nesting eiders live inland. Arctic terns, seals, whales and reindeer are also a common sight.

Wander through the solidified lava flows that were left in the wake of Heimaey Island's devastating 1973 eruption. Visit the island's fascinating **Eldheimar museum** to learn more about that fateful day.

HORSING AROUND
 The native Icelandic horse is the only horse breed in Iceland and one of the purest horse breeds in the world.

→ Starting from € 9,864 per person in double Oceanview Stateroom occupancy



Small inlet in Scoresbysund, eastern Greenland

Extraordinary Encounters



Around 40% of the muskoxen in the world live in Greenland, and they like to forage along the coast, so you have a good chance of spotting some of these incredible bison-like mammals on your cruise. These gentle giants can weigh up to half a tonne and are one of the few hooved animals to have survived the last ice age. They are thought to have been wandering across the tundra for over a million years, which explains their very prehistoric demeanour. They are well adapted to the Arctic environment, and their thick layered coats can keep them warm in temperatures as low as -40C.



Muskox in tundra

Live it!

Pompei of the North Heimaey Island

On this tour, we'll learn about the 1973 volcanic eruption that changed the course of Heimaey's history and explore the lava fields left in its wake. Leaving Heimaey's buzzing port behind as we make our way to the Herjólfsdalur valley, we'll find the ruins of old Viking houses dating back to 900 AD. Continuing to the western part of the island, we'll have the opportunity to view the other Westman Islands before visiting the Eldheimar Museum to learn more about the 1973 eruption.

Included

Horseback Riding in the Eastern Fjords Seydisfjordur

Enjoy a scenic drive to the family-run horse farm Skorrahestar, where you will get an insight into the story of the remarkable Icelandic horse breed. Join a riding tour led by expert local guides and get a taste of Icelandic folklore and history along the way.

Optional

Stepping Out



Zodiac

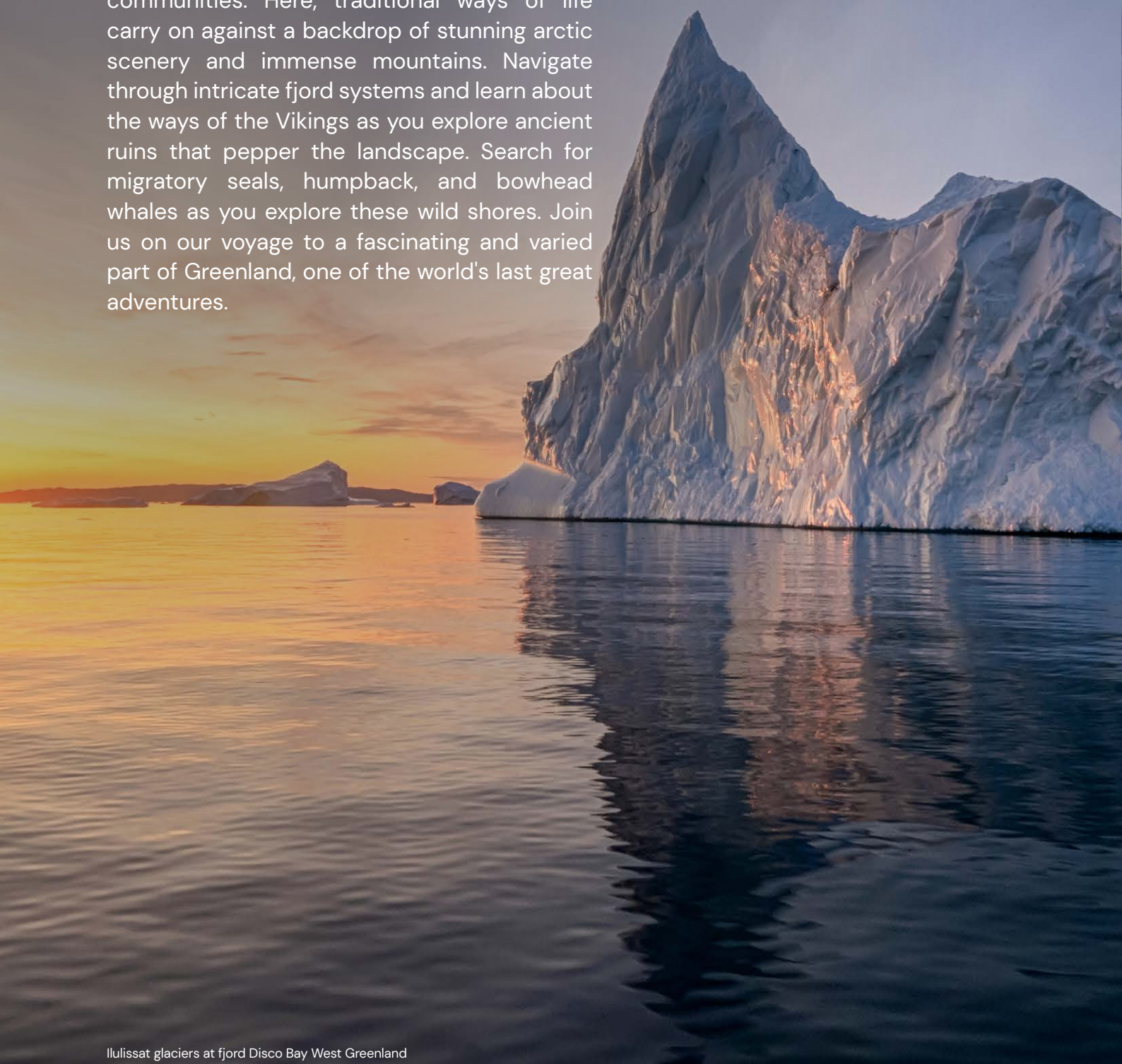


Traditional hut in the Westfjords in Iceland

Greenland in-depth

30 Aug – 9 Sep 2024 SH Vega
 Reykjavik – Kangerlussuaq 10 nights

Discover the rugged majesty of Greenland's rocky coastline and the warmth of its resilient communities. Here, traditional ways of life carry on against a backdrop of stunning arctic scenery and immense mountains. Navigate through intricate fjord systems and learn about the ways of the Vikings as you explore ancient ruins that pepper the landscape. Search for migratory seals, humpback, and bowhead whales as you explore these wild shores. Join us on our voyage to a fascinating and varied part of Greenland, one of the world's last great adventures.



Ilulissat glaciers at fjord Disco Bay West Greenland



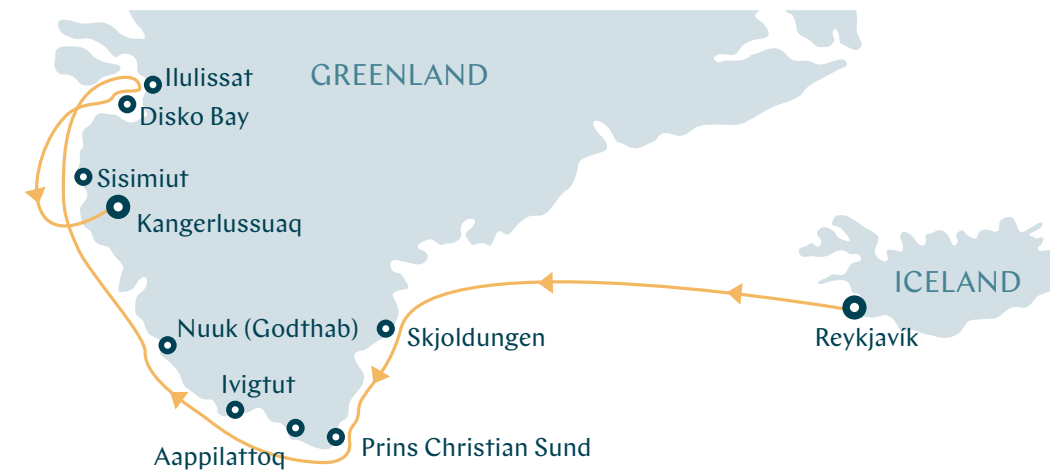
Colourful little Arctic town, Sisimiut



WHAT'S IN A NAME?
 Greenland is sometimes called Inuit Nunaat in Greenlandic, which means 'Land of the People'

Day	Visiting
1	Reykjavik
2	At Sea
3	Skjoldungen
4	Prins Christian Sound & Aappilattoq
5	Ivigut
6	Nuuk (Godthab)
7	Sisimiut
8	Ilulissat
9	Disko Bay
10-11	Kangerlussuaq, Greenland

Ports, port order and itinerary duration may vary, for the most up-to-date details see swanhellenic.com



IVITTUT
 Explore the abandoned mining town, once the world's largest reserve of naturally occurring cryolite

5 Unmissables

Navigate the remote and stunning **Skjoldungen Fjord** – a narrow fjord surrounded by rugged peaks, calving tidewater glaciers and brightly coloured dwarf and willow trees. Look out for the abandoned Inuit dwellings scattered along the shores.

Sail through Prins Christian Sund – the steep-sided 100km fjord that separates the mainland from the **Cape Farewell Archipelago**. Choked with ice for most of the year, the narrow route is only accessible in the summer.

Sail near the Ilulissat Ice Fjord, a **UNESCO World Heritage Site**. Marvel at the thousands of massive stranded icebergs at Disko Bay at the end of the fast-moving glacial stream – an awe-inspiring sight.

Explore the lively town of Ilulissat and pay a visit to the fascinating museum, the beautiful wooden **Zion's Church** and the traditional kayak displays.

Visit the remote colourful **fishing towns** that are dispersed along Greenland's rugged west coast. Wander the charming streets as locals hunt, fish and go about their daily lives in these friendly communities.

→ Starting from € 14,950 per person in double Oceanview Stateroom occupancy



Extraordinary Encounters

Although much of Greenland is covered in ice, several iconic Arctic species thrive on its land and in its skies and waters.

The ringed seal is a common sighting. These tough little mammals have adapted extremely well to Arctic life and can be spotted feeding, playing and resting along the icy fjords. The cunning (and very cute) Arctic fox is widespread throughout Greenland. These resourceful creatures will stalk polar bears hoping to get a few scraps of what's left behind from the bear's next kill.

The Greenland sled dog is synonymous with East Greenland and is one of the purest and most isolated dog breeds in the world. These dogs are known for their strength, willpower and resilience.



Greenlandic dog Sisimiut, Greenland



Ringed Seal Greenland

Live it!

Sisimiut Sightseeing Drive Sisimiut

Discover the way of life in Sisimiut as you drive past its buildings. Learn about the city's culture and history whilst making some interesting stops along the way, then take in the incredible view of the mountains and sea from the Sisimiut's highest point.

Included

Helicopter Flightseeing to Ilulissat Glacier Ilullisat

Discover the source of the Ilulissat's icebergs as you soar over the Greenland Ice Sheet. Take to the skies and enjoy the bird's eye view of this incredible land of ice as we make our way to the Sermeq Kujalleq – the most productive glacier in the northern hemisphere.

Optional

Stepping Out  

Zodiac Kayaking

Voyage to the Northwest Passage

📅 9 – 25 Sep 2024 🚢 SH Vega

📍 Kangerlussuaq – Kangerlussuaq 📅 16 nights

Follow in the wake of the great explorers of the past on your own quest through one of history's most notorious sea routes. Explore Baffin Bay in the Canadian Arctic before navigating part of the famous Northwest Passage. Look out for mighty polar bears feeding on the shore as you navigate deep fjords, listening to the haunting sound of creaking icebergs. Your voyage will take you to a region that has been visited by some of history's greatest explorers, including John Franklin, James Ross and Norwegian Roald Amundsen – the first person to successfully sail through the Northwest Passage. You'll also visit friendly Inuit communities, learning how these hardy people make a living in this hostile place.

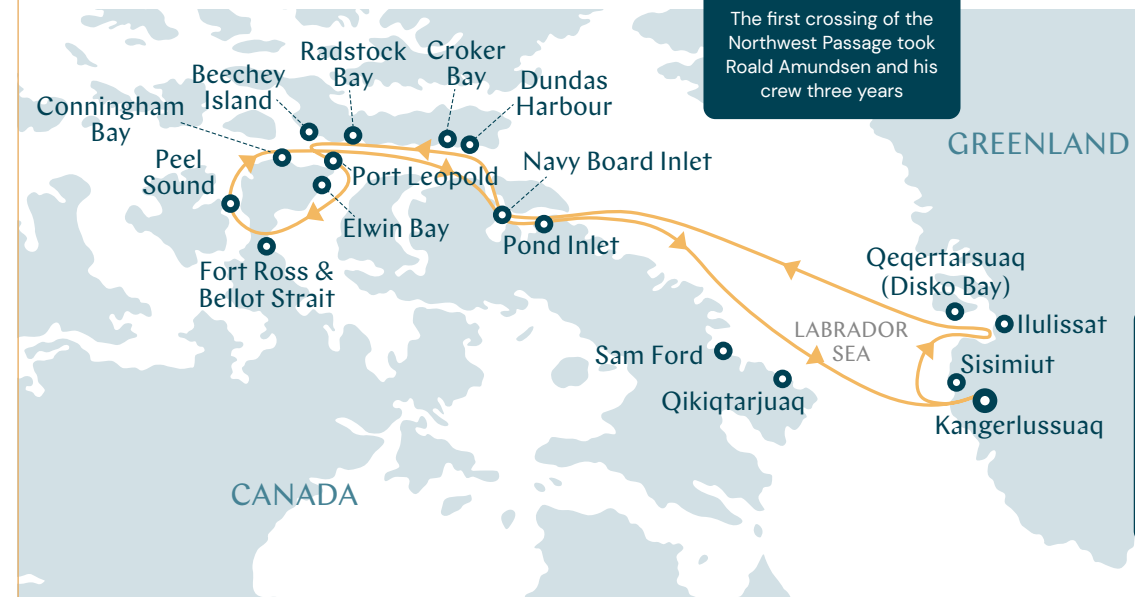
Dundas Harbour, Nunavut (Canada)

Fort Ross, Nunavut



Day	Visiting
1	Kangerlussuaq, Greenland
2	Sisimiut
3	Ilulissat
4	Qeqertarsuaq
5	At Sea
6	Pond Inlet, Nunavut
7	Dundas Harbour & Croker Bay
8	At Sea
9	Radstock Bay & Beechey Island
10	Elwin Bay
11	Fort Ross & Bellot Strait
11-12	Cruising Peel Sound
13	Cruise Navy Board Inlet
14-15	At Sea
16-17	Kangerlussuaq, Greenland

Ports, port order and itinerary duration may vary, for the most up-to-date details see swanhellenic.com



THE LONG WAY AROUND

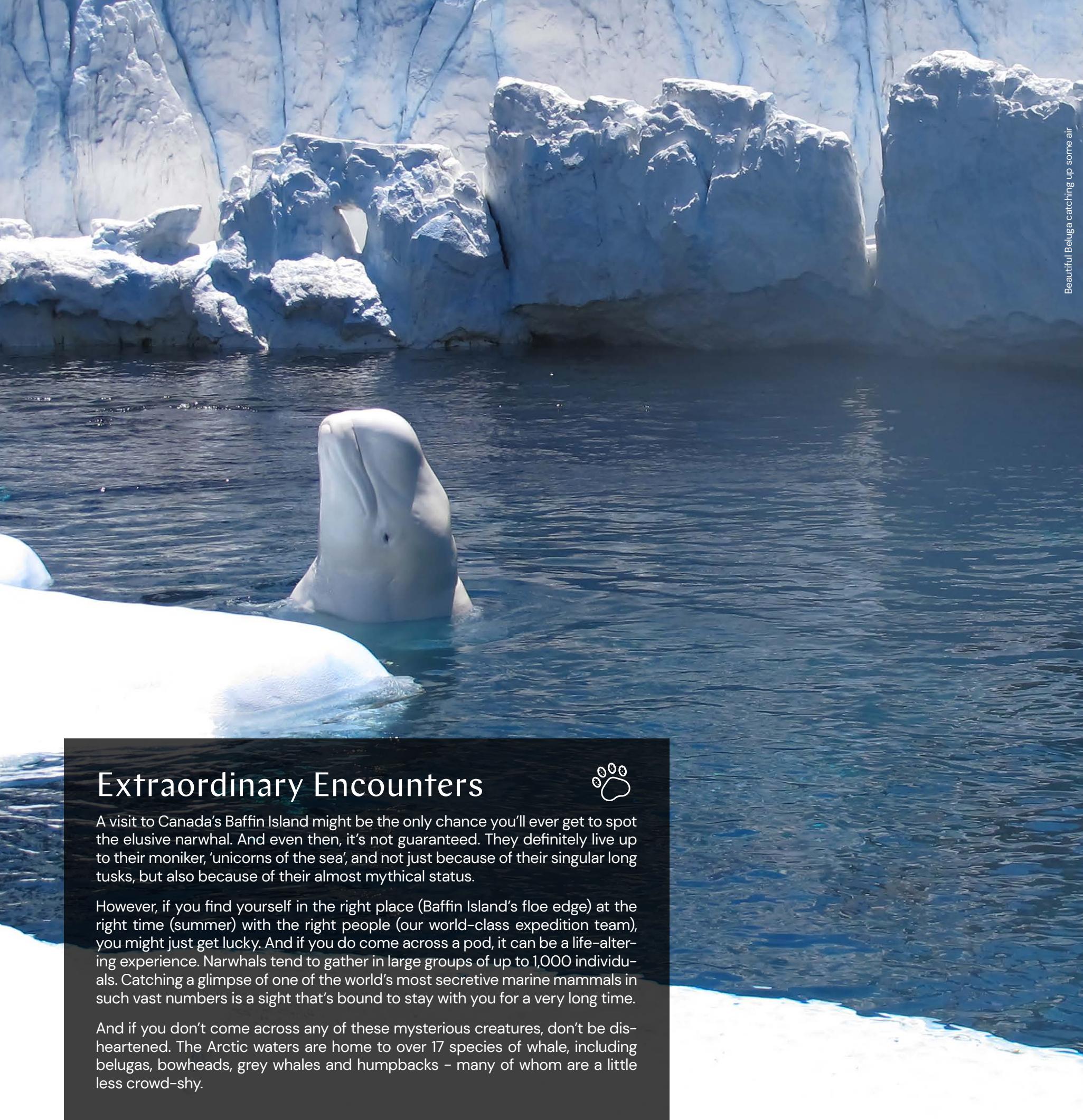
The first crossing of the Northwest Passage took Roald Amundsen and his crew three years

INDIGENOUS LEGACIES

Around fifty per cent of the Canadian Arctic's population consists of indigenous communities

→ Starting from € 22,930 per person in double Oceanview Stateroom occupancy





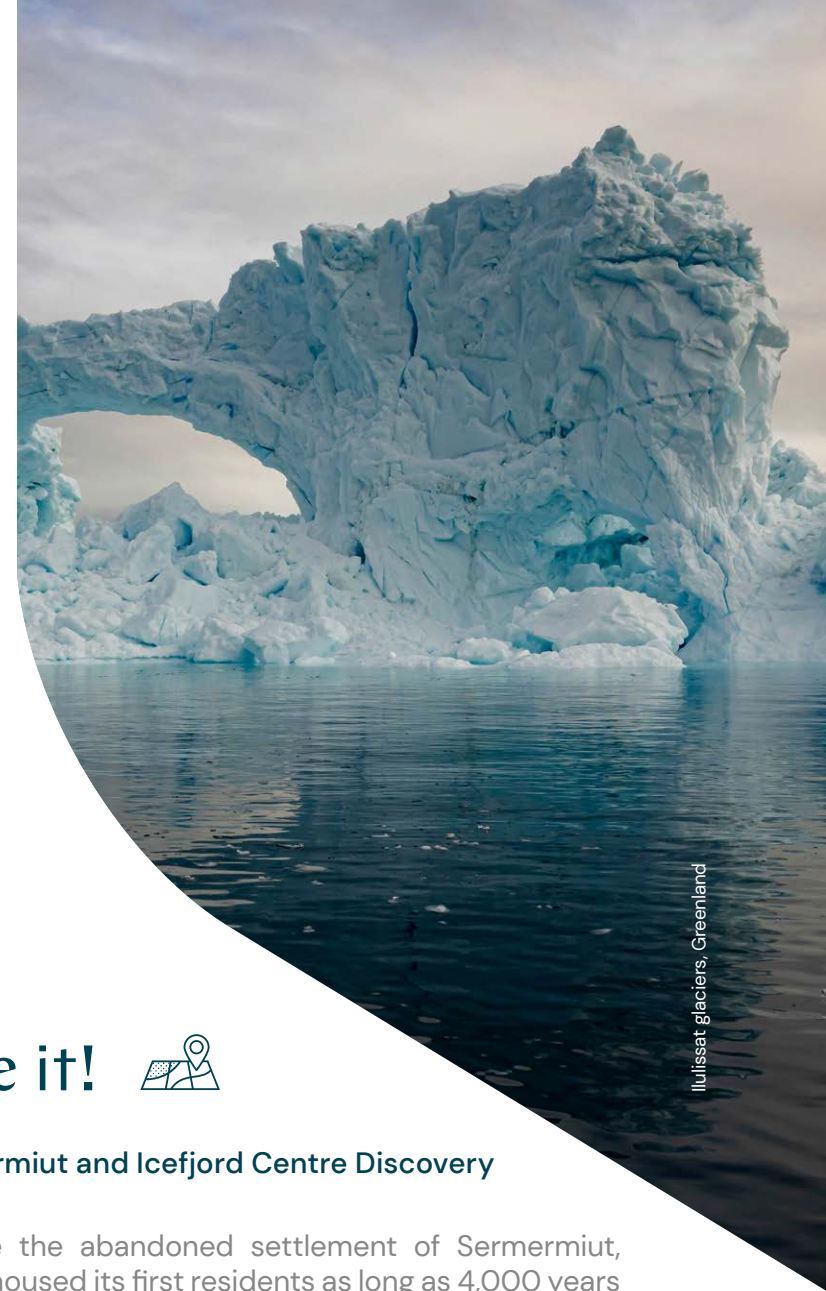
Beautiful Beluga catching up some air

Extraordinary Encounters

A visit to Canada's Baffin Island might be the only chance you'll ever get to spot the elusive narwhal. And even then, it's not guaranteed. They definitely live up to their moniker, 'unicorns of the sea', and not just because of their singular long tusks, but also because of their almost mythical status.

However, if you find yourself in the right place (Baffin Island's floe edge) at the right time (summer) with the right people (our world-class expedition team), you might just get lucky. And if you do come across a pod, it can be a life-altering experience. Narwhals tend to gather in large groups of up to 1,000 individuals. Catching a glimpse of one of the world's most secretive marine mammals in such vast numbers is a sight that's bound to stay with you for a very long time.

And if you don't come across any of these mysterious creatures, don't be disheartened. The Arctic waters are home to over 17 species of whale, including belugas, bowheads, grey whales and humpbacks - many of whom are a little less crowd-shy.



Ilulissat glaciers, Greenland

Live it!

Sermermiut and Icefjord Centre Discovery Ilulissat

Explore the abandoned settlement of Sermermiut, which housed its first residents as long as 4,000 years ago. We'll also visit the Icefjord Centre to learn more about Greenland's natural and human history. Take in the panoramic view of the icefjord below from the rooftop.

Included

Radstock Bay and Beechey Island Tour Nunavut, Canada

Explore the shores of Radstock Bay with our knowledgeable expedition team - here, we'll visit Caswell Tower. Beneath this stone outcrop are several Thule-era archaeological sites. Next, we'll head to Beechey Island, where Sir John Franklin and his crew lived out their final days following the infamous ill-fated expedition.

Included

Stepping Out 
Zodiac

Greenland to Nova Scotia exploring the Canadian Arctic

📅 25 Sep – 10 Oct 2024 🚢 SH Vega
📍 Kangerlussuaq – Halifax 🗓️ 15 nights

Start your cruise above the Arctic Circle, where the summer sun never sets, on this exploration of the west coast of Greenland and northern shores of Canada. As you set sail from Greenland, gaze in awe at the ice-filled straits and deep fjords crammed with gargantuan icebergs before observing some of the Arctic's most iconic wildlife in Baffin Bay. The remote Northern Canada coast around the province of Nunavut is a haven for caribou and polar bears who roam the treeless tundra. Meet the friendly indigenous Inuit people and listen to the stories of their ancestors in these rugged lands. Then discover ancient Norse sites in Newfoundland as the ship traces a path to Nova Scotia.

Akpatok Island, Labrador Peninsula, Nunavut, Canada

Iqaluit, Nunavut

Day	Visiting
1	Kangerlussuaq, Greenland
2	At Sea
3	Qeqertarsuaq
4	Ilulissat
5	Sisimiut
6	Nuuk (Godthab)
7	At Sea
8	Iqaluit
9	Lady Franklin Island
10	Torngat Mountains National Park
11	Hebron
12	At Sea
13	L'Anse aux Meadows
14	Bonne Bay
15	At Sea
16	Halifax, Nova Scotia

Ports, port order and itinerary duration may vary, for the most up-to-date details see swanhellenic.com



LET'S TALK
Nunavut has four official languages: English, French and the Inuit languages Inuktitut and Inuinnaqtun

GLACIAL HISTORY
The Iceberg that sank the Titanic in 1912 is thought to have originated in the Ilulissat Icefjord

→ Starting from € 20,518 per person in double Oceanview Stateroom occupancy



5 Unmissables

- Look on in awe at the imposing, glistening glaciers as they make their way from the ice-choked Ilulissat Icefjord to Disko Bay.
- Take in all that the lively Arctic town of Ilulissat has to offer – pay a visit to the fascinating museum, stop in at the beautiful wooden Zion's Church and marvel at the **traditional kayak displays**.
- Explore Nunavut's friendly yet far-away capital, **Iqaluit** – a dynamic city steeped in culture – where traditional Arctic life coexists with modern living. Visit Nunatta Sunakkutaagngit Museum to learn more about local Inuit life.
- Take in the untamed wilderness, spectacular scenery, and vibrant fall colours in Newfoundland's **Torngat Mountains National Park**.
- Witness continental drift in action at the spectacular **Gros Morne National Park** – a UNESCO World Heritage Site.



Arctic sterna

Extraordinary Encounters



With its diverse topography, the rugged and remote Baffin Island is home to some of the most sought-after animals in the Arctic. Caribou, polar bears, Arctic wolves and lemmings can be found on the island year-round. And ringed seals (a favourite polar bear meal), harp seals, walrus, beluga whales, bowhead whales and elusive and rarely sighted narwhals all inhabit the surrounding Arctic waters.

In the summer Baffin Island attracts a variety of migrating bird species, including several species of geese, waders and Arctic tern.



Live it!

Sermermiut and Icefjord Centre Discovery Ilulissat

Explore the abandoned settlement of Sermermiut, which housed its first residents as long as 4,000 years ago. We'll also visit the Icefjord Centre to learn more about Greenland's natural and human history. Take in the panoramic view of the icefjord below from the rooftop.

Included

Tablelands Hike: A Rare Piece of History Bonne Bay

The unique Tablelands overlooking Bonne Bay in Woody Point prompted the designation of Gros Morne National Park as an UNESCO World Heritage Site. Visit the Gros Morne Discovery Centre to learn about the forces of nature that shaped this area of Newfoundland, then Continue to the Tablelands, where an easy hike will allow you to see the exposed Earth's mantle.

Optional

Stepping Out

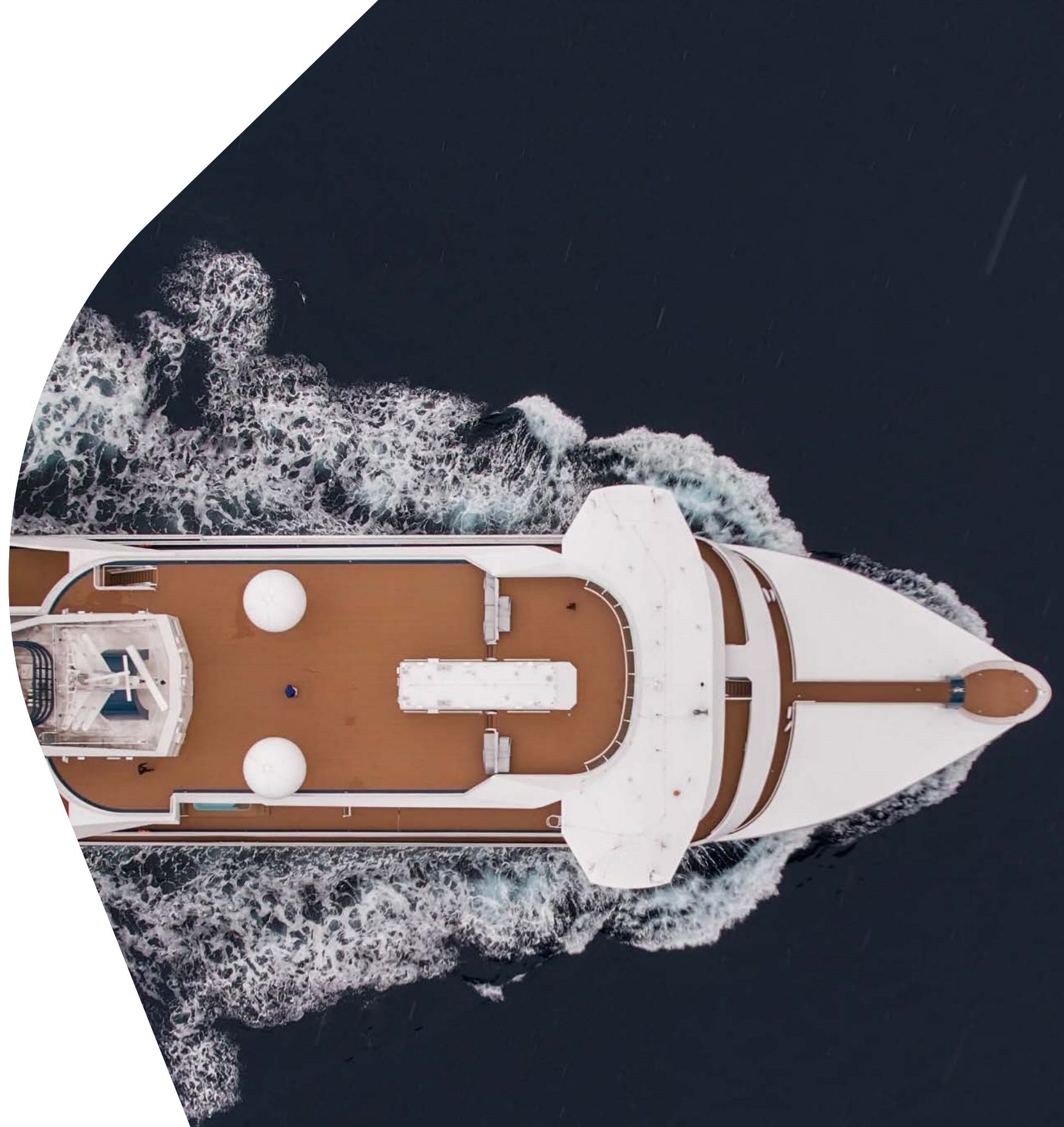


Zodiac

A new class of exploration

Immerse yourself in breathtaking panoramic views, elegant interiors, and sophisticated onboard facilities.

Our fleet of 5-star boutique ships — SH Minerva, SH Vega and SH Diana — have taken expedition cruising to new heights. Built in the Helsinki Shipyard in Finland, these ships combine the latest in expedition technology with stylish, sophisticated design. Featuring elegant interiors, wide unobstructed views throughout the ship and dedicated expedition facilities for a remarkable travel experience. Explore off-the-beaten-track destinations in style and comfort as you take in the scenery from a panoramic sauna, warm up in an outdoor hot tub, dine in a world-class restaurant, and unwind in an elegant stateroom. This is boutique cruising at its finest.



SH Vega

Boutique cruising at its finest

SH Minerva, SH Vega, and SH Diana are sister ships designed to navigate the most inspiring, inaccessible places on earth. All the while offering guests an immersive, 5-star experience.



The interiors are spacious and tasteful, with plush furnishing and floor-to-ceiling windows that give you unobstructed views of some of the most incredible landscapes in the world. On board, savour international cuisine imagined by renowned chefs, unwind in a sophisticated stateroom and make full use of state-of-the-art spa, fitness and expedition facilities.



The Swan Restaurant

As the main venue for breakfast, lunch and dinner, our 152-seat restaurant serves international and local cuisine focussed on quality regional ingredients from the unique destinations we visit.



Club Lounge

Vibrant and welcoming, The Club Lounge acts as a hub, combining 24 hour tapas inspired dining with panoramic views of the ocean glittering below.



Sauna with a View

Head to Deck 8 for the best views in the world. After a work out in our state-of-the-art gym, relax in our sauna or jacuzzi and take in those breathtaking vistas along the way.



Observation Lounge

After a day of exploration, where better to relax than in the Observation Lounge? Sit back, savour your favourite tittle whilst getting to know your fellow guests.



Alfresco Dining & Heated Outdoor Pool

On Deck 7, you'll find a heated outside pool along with pool side seating from where you can enjoy stunning scenery.

SH Minerva & SH Vega

- 120 crew
- 150 guests
- 9 decks

SH Diana

- 141 crew
- 192 guests
- 9 decks

Our heated outdoor pool

SH Vega

Our elegant 5-star ships offer a boutique home-from-home. With a chic Scandinavian-inspired design and world-class technology, you'll experience an expedition cruise like no other.

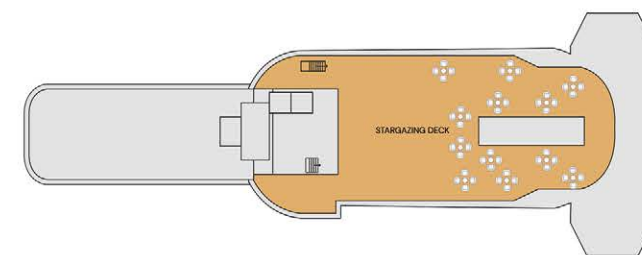


Stateroom Category:

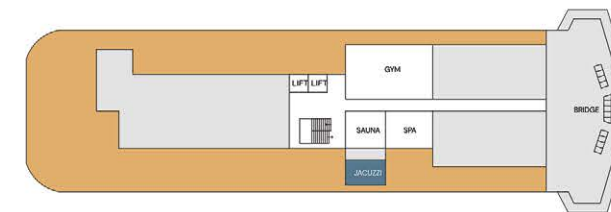
- Oceanview D4: 4 (19m²) ●
- Oceanview M4: 12 (19m²) ●
- Balcony D5: 8 (28m²) ●
- Balcony M5: 22 (28m²) ●
- Balcony D6: 24 (28m²) ●
- Suite: 4 (44m²) ●
- Premium Suite: 2 (49m²) ●

Ship Specification:

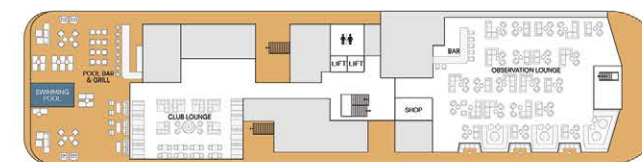
- Guest Capacity 152
- Staff 120
- No. of Decks 9
- Staterooms 76
- Length 371ft (113m)
- Breadth 75ft (23m)
- Tonnage 10,500
- Cruising Speed 15.5 knots
- 3rd Guest Capacity ▲
- 4th Guest Capacity ■
- Connecting Staterooms ↔
- Wheelchair Accessible Staterooms ♿ 415
- Propulsion Hybrid Diesel Electric, Polar Class PC5
- Registered Panama
- Lifeboats 2
- Zodiacs 11 MK V, 2 MK VI



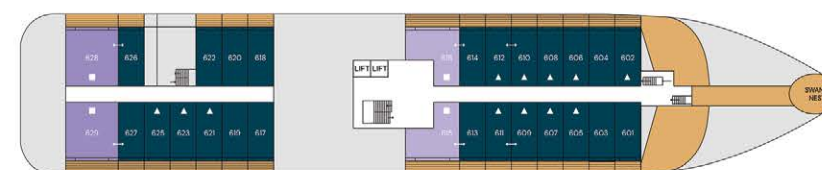
Deck 9
Stargazing Deck



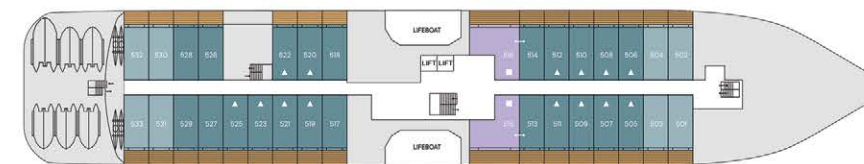
Deck 8
Gym
Sauna
Jacuzzi
Spa
Bridge



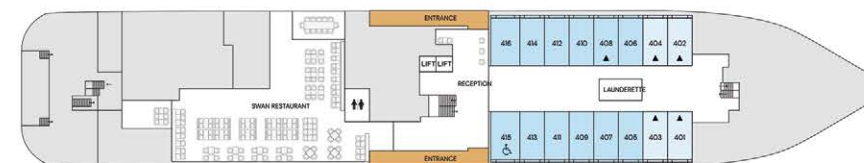
Deck 7
Shop
Swimming Pool
Pool Bar & Grill
Club Lounge
Observation Lounge



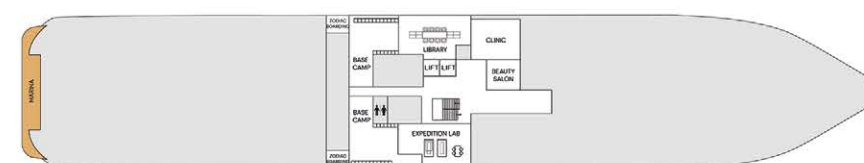
Deck 6
Premium Suites
Suites
Balcony Staterooms D6
Swan's Nest



Deck 5
Balcony Staterooms D5, M5
Suites



Deck 4
Reception
Laundrette
Swan Restaurant
Oceanview Staterooms D4, M4



Deck 3
Clinic
Library
Basecamp
Beauty Salon
Expedition Lab

Stargazing Deck onboard SH Vega

SH Diana

The largest 5-star ship in our fleet, SH Diana (named after the Roman goddess of light, the moon, hunting and the wilderness) is elegant, spacious and built to explore the Mediterranean's famous sites of antiquity and beyond.

Stateroom Category:

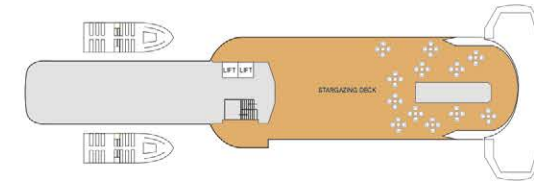
- Oceanview: 20 (20m²) ●
- Balcony: 66 (28m²) ●
- Junior Suite: 4 (35m²) ●
- Suite: 4 (44m²) ●
- Premium Suite: 2 (47m²) ●

Ship Specification:

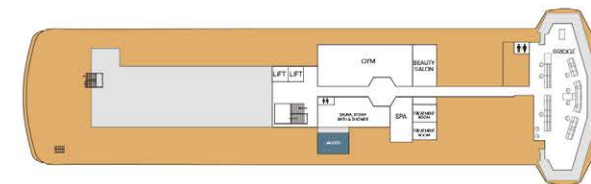
- Guest Capacity: 192
- Staff: 141
- No. of Decks: 9
- Staterooms: 96
- Length: 410 ft (125m)
- Breadth: 75 ft (23m)
- Tonnage: 12,100 GRT
- Cruising Speed: 14.5 knots
- Propulsion: Hybrid Diesel Electric, Polar Class PC6
- Registered: Malta
- Lifeboats: 2
- Tender: 2
- Zodiacs: 13 MK V, 2 MK VI

Accessible Staterooms: 419 (Deck 4), 635 (Deck 6)

The Swan's Nest, onboard SH Diana



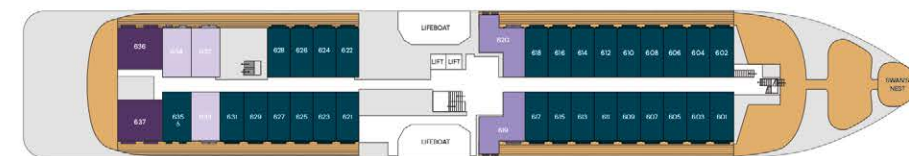
Deck 9
Stargazing Deck



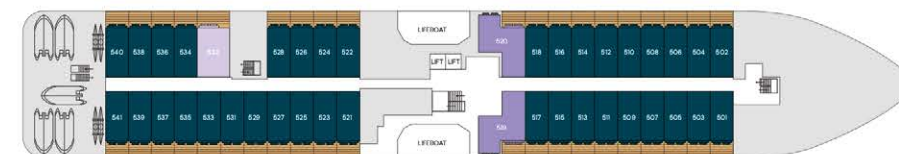
Deck 8
Gym
Sauna
Jacuzzi
Spa
Beauty Salon
Bridge



Deck 7
Swimming Pool
Pool Bar & Grill
Club Lounge
Events Room
Observation Lounge



Deck 6
Premium Suites
Suites
Junior Suites
Balcony Staterooms
Swan's Nest



Deck 5
Balcony Staterooms
Junior Suites
Suites



Deck 4
Swan Restaurant
Reception
Oceanview Staterooms
Launderette



Deck 3
Marina Deck
Zodiac Boarding
Basecamp
Library
Expedition Lab
Clinic
Laundry

Your home away from home

Relax in the understated elegance of your stateroom or suite. A sophisticated blend of muted tones, natural textures and intuitive technology, the Scandi-inspired design seamlessly blends the natural world with 5-star comforts. The variety of lighting options and crackling holographic fire offer the perfect option for cozy evenings, and the floor to ceiling windows and balcony doors ensure that no sunset or surprise sighting goes unmissed.

Your perfect space

Each of our beautifully designed staterooms has everything you need for a pampered stay. Fluffy dressing gowns, spacious dressing and seating areas and ample storage, as well as a well-stocked minibar and a personal safe. The desk in your room is the perfect place to plan the next day's adventures, and you won't miss a wildlife sighting with your Nikon telescope. Glass-enclosed rain showers with luxury personal care products transform your ensuite into a personal spa.



Onboard stateroom suite. Suite sizes and categories vary by ship

Amenities in your cabin

- Welcome Champagne bottle
- Snacks
- Stocked minibar with soft drinks and beer
- Illy Espresso coffee machine with coffee pads
- Tea Kettle and Kusmi tea bags
- TV service
- Free Wi-fi connection, subject to satellite reception
- Hair dryer
- Towels for cabin, swimming pool and gym
- Bathrobe
- Bedroom slippers
- High quality toiletries by Lajatica, custom made for our selection onboard. These include hand soap, shower gel, shampoo, conditioner and body lotion.



Premium Suite
49m² (528ft²) | Sleeps 4

Premium Suites feature a king size bed and separate living room with a soothing, flame-effect fireplace, a luxurious ensuite bathroom with separate bath tub and walk-in shower, a spacious walk-in wardrobe and a 12m² (129ft²) private balcony.



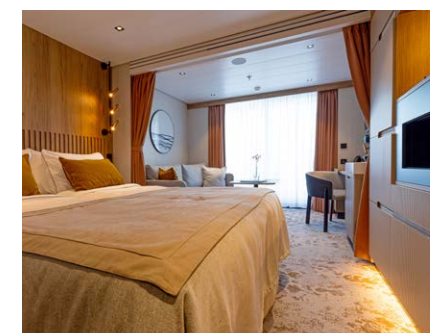
Suite
44m² (474ft²) | Sleeps 4

Suites feature a king size bed and separate living room with a soothing flame-effect fireplace, a luxurious ensuite bathroom with separate bath tub and walk-in shower and a 12m² (129ft²) private balcony.



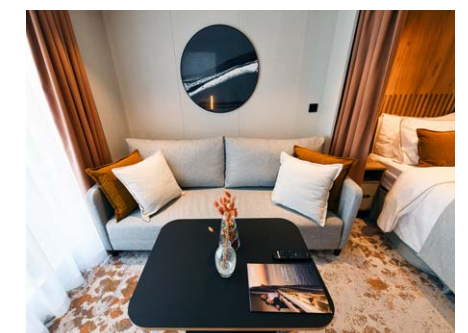
Junior Suite (only on SH Diana)
35m² (377ft²) | Sleeps 2/3

Features a king size bed, separate living room area with homely flame-effect fireplace, private kitchen, luxurious en-suite bathroom and a 7 sq. m private balcony.



Balcony
28m² (302ft²) | Sleeps 2/3

Balcony Staterooms feature two single beds or a double bed bedroom with living room area, a luxurious bathroom and your own private 6m² (65ft²) balcony.



Oceanview
19m² (205ft²) | Sleeps 2


Oceanview Staterooms feature two single beds or a double bed with living room area and a luxurious bathroom.

SH Vega


Named after the first ship to cross the Arctic Northeast Passage, this 5 star elegant 'Scandi-design' boutique ship leaves nothing to be desired. The perfect way to explore the world, from the Arctic and Iceland to Africa and South America.



SOUTH SHETLAND ISLANDS
Slightly warmer than Antarctica, these islands showcase unique flora and fauna when explored via Zodiac.



ABROLHOS ARCHIPELAGO
Charles Darwin explored these diversely populated islands, and their extensive reefs have caused many shipwrecks.



ÎLES DU SALUT
Of volcanic origin, the 'Islands of Salvation' boast a distinctive blend of mixed-Creole and indigenous culture.



DISKO BAY
Various whales roam the waters of the bay in springtime, including bowheads, humpbacks and narwhals.



CONKOUATI RESERVE
Of the three national parks in Congo, beautiful Conkouati is the newest and most biodiverse.



BIJAGOS ARCHIPELAGO
A tropical paradise off Guinea-Bissau's coast with pristine beaches, lush mangroves and vibrant marine life.



GRIMSEY ISLAND
With a human-to-bird ratio of 1:10,000, Grimsey is perfect for puffin-spotting in summer.



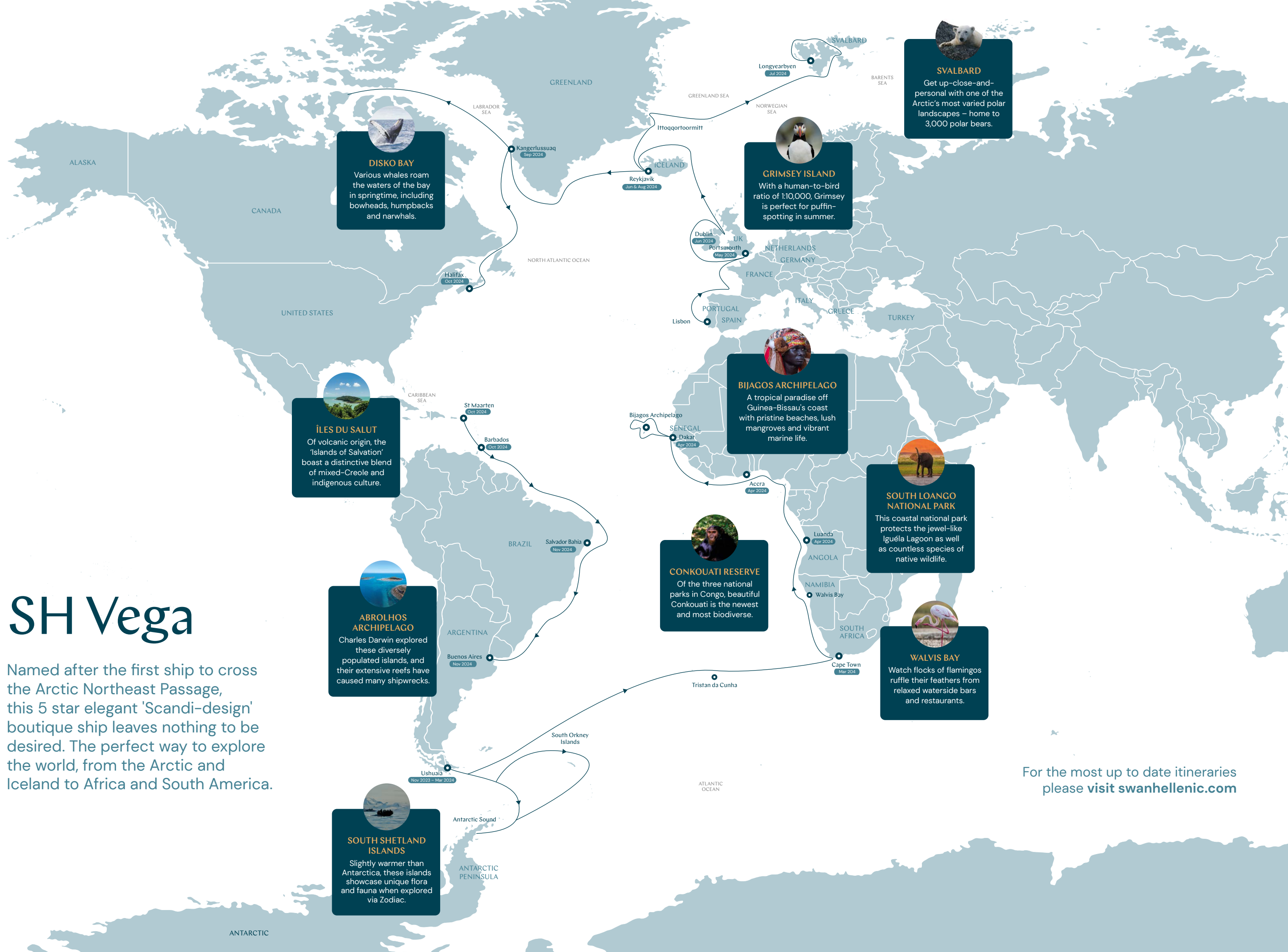
WALVIS BAY
Watch flocks of flamingos ruffle their feathers from relaxed waterside bars and restaurants.



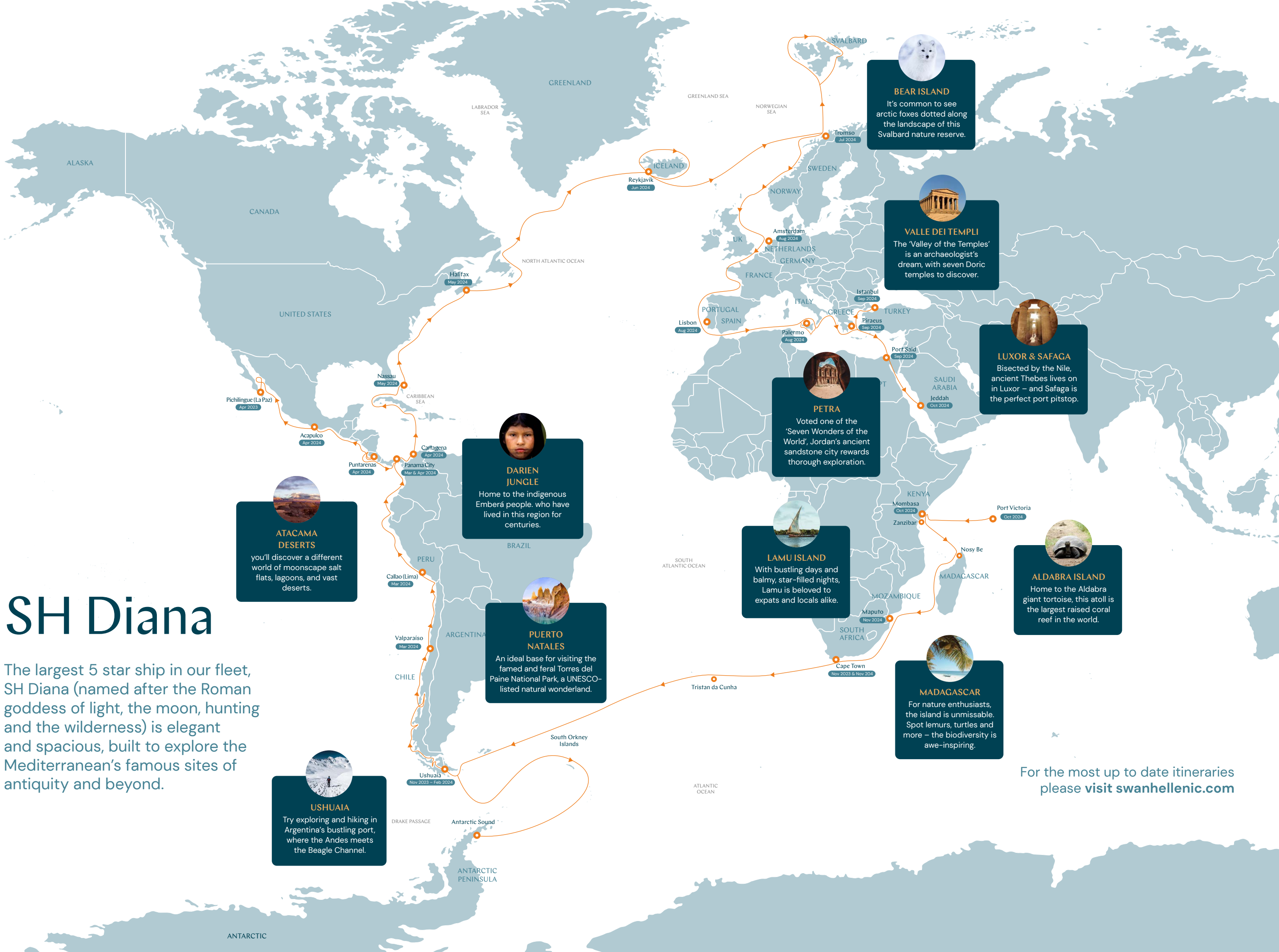
SOUTH LOANGO NATIONAL PARK
This coastal national park protects the jewel-like Iguéla Lagoon as well as countless species of native wildlife.



SVALBARD
Get up-close-and-personal with one of the Arctic's most varied polar landscapes – home to 3,000 polar bears.



For the most up to date itineraries please visit swanhellenic.com



SH Diana

The largest 5 star ship in our fleet, SH Diana (named after the Roman goddess of light, the moon, hunting and the wilderness) is elegant and spacious, built to explore the Mediterranean's famous sites of antiquity and beyond.

ATACAMA DESERTS
you'll discover a different world of moonscape salt flats, lagoons, and vast deserts.

DARIEN JUNGLE
Home to the indigenous Emberá people, who have lived in this region for centuries.

PUERTO NATALES
An ideal base for visiting the famed and feral Torres del Paine National Park, a UNESCO-listed natural wonderland.

USHUAIA
Try exploring and hiking in Argentina's bustling port, where the Andes meets the Beagle Channel.

BEAR ISLAND
It's common to see arctic foxes dotted along the landscape of this Svalbard nature reserve.

VALLE DEI TEMPLI
The 'Valley of the Temples' is an archaeologist's dream, with seven Doric temples to discover.

LUXOR & SAFAGA
Bisected by the Nile, ancient Thebes lives on in Luxor – and Safaga is the perfect port pitstop.

PETRA
Voted one of the 'Seven Wonders of the World', Jordan's ancient sandstone city rewards thorough exploration.

LAMU ISLAND
With bustling days and balmy, star-filled nights, Lamu is beloved to expats and locals alike.

ALDABRA ISLAND
Home to the Aldabra giant tortoise, this atoll is the largest raised coral reef in the world.

MADAGASCAR
For nature enthusiasts, the island is unmissable. Spot lemurs, turtles and more – the biodiversity is awe-inspiring.

For the most up to date itineraries please visit swanhellenic.com

Book your Arctic expedition cruise

The wilds of the Arctic have fascinated adventurers and explorers for decades. The many who attempted and ultimately failed to cross the infamous Northwest Passage experienced the fierceness of this hostile landscape to an often tragic end. When Norway's Roald Amundsen finally succeeded in 1903, it took him and his crew three years.

Today, the Arctic commands as much respect as it did in Amundsen's day – but is much more accessible thanks to world-class ship technology like ours. Stand on the shoulders of the giants who paved the way into this wild yet remarkable corner of our planet on a cultural expedition cruise in the Arctic.

Join us aboard our ice-class expedition ships to explore this last frontier – it's sure to be an extraordinary adventure.

Terms & Conditions

Please read these travel conditions carefully before booking your package tour, because you accept them as binding with your booking.

The following terms and conditions apply to all bookings and, where effectively agreed, govern the contractual relationship between you and Swan Hellenic Travel Ltd. (hereinafter referred to as "Swan Hellenic Travel") in addition to the legal provisions of EU Package Travel Directive respectively the national law implementation of named directive – as here i.e. the Cyprus implementation as "The Package Travel and Linked Travel Arrangements Law Number 186(I) of 2017, or respectively the applicable transition of EU directive 2015/2302 into national law for your country, where the travel modules are offered. The travel conditions supplement and complete these. Before concluding a package tour contract, we must inform you about the details of your cruise package tour, which are substantial, as well as about your rights under EU Directive 2015/2302. You can find the information on your package tour in the general and specific service descriptions of our tours and these travel conditions. In addition to your rights under EU Directive 2015/2302, we have included the required form on our website, in your travel agency and in the booking systems in which our trips can be booked. In addition, the General Conditions of Carriage of Passengers and their Luggage by Sea of the Carrier/Shipping Company (conditions of carriage) and the Conditions of Carriage of the Operating Carrier for regular scheduled flights with international airlines apply to flight services. These conditions are available from your travel agent or on request from our call center.

We would like to point out that tour operator within the meaning of the applicable statute as transitional definition of the named EU directive – in the Cyprus "The Package Travel and Linked Travel Arrangements Law 186 (I) of 2017 is exclusively Swan Hellenic Travel Ltd., for all trips offered on the website.

The term "customer" is used below to refer to our contractual partner and the term "traveller" to refer to those persons who actually commence the journey.

We recommend every traveller to take out a travel cancellation insurance, travel interruption insurance and a travel health insurance policy with assumption of the return transport costs of repatriation.

PERSONAL REQUIREMENTS OF THE TRAVELLER

The customer assures that the travellers are fit to travel. Swan Hellenic Travel has the right to demand a medical certificate from the customer stating that the travellers are fit to travel. Persons under 18 years of age may only take part in a journey when accompanied by a person 18 years of age or older. Swan Hellenic Travel cannot guarantee the necessary medical care for children. Children under the age of 8 are not eligible for Swan Hellenic Cruises. Unfortunately, women who will enter the 24th week of pregnancy by the end of their booked cruise cannot take part in such a cruise.

1. REGISTRATION AND CONCLUSION OF THE TRAVEL CONTRACT

- 1.1 With the booking (travel registration) the customer bindingly offers Swan Hellenic Travel the conclusion of a travel contract and at the same time confirms to Swan Hellenic Travel the knowledge of the above mentioned pre-contractual information. Registration is possible in writing, by fax or electronically, in exceptional cases also by telephone. It is made by the applicant also for all participants listed in the registration. The basis of this offer is the travel advertisement with all information contained therein, in particular also with regard to offered flight services, as well as these travel conditions.
- 1.2 The package travel contract is concluded exclusively with the written travel confirmation or invoice by Swan Hellenic Travel. The electronic confirmation of receipt of the travel registration as well as a booking form signed at the travel agency, if applicable, do not constitute acceptance of the travel contract. If the travel confirmation is made immediately after pressing the button "Book Now" by the immediate display of the travel confirmation on the screen, the package travel contract is concluded with the display of this travel confirmation. Swan Hellenic Travel is not obliged in case of non-acceptance of the travel request to expressly declare non-acceptance and/or to justify non-acceptance to the customer.
- 1.3 The customer is responsible for all contractual obligations of fellow travellers for whom he makes the booking as for his own, provided that he has assumed this obligation by express and separate declaration.
- 1.4 If the content of the travel confirmation deviates from the content of the registration, Swan Hellenic Travel shall be bound to this new offer for 7 days. The travel contract is concluded on the basis of the new offer if the customer accepts the offer by express declaration, down payment, payment of the balance or commencement of travel within the specified period. According to the legal regulations for cruise package contracts concluded at a distance (e.g. via letters, telephone calls, e-mails, telemedia or online services), there is no right of rescission, but only the legal right of withdrawal and cancellation. However, a right of cancellation exists if the contract for travel services has been concluded outside business premises, unless the negotiations on which the conclusion of the contract is based were based on a previous order by the consumer; in the latter case there is no right of rescission.

2. PAYMENT

- 2.1 Swan Hellenic Travel and travel agents may only demand or accept payments on the travel price before the end of the trip, if the security note/ bonding information has been handed over to the customer. After conclusion of the contract, a down payment of 15% of the cruise package price is due upon handing over of the security certificate. The remaining payment is due 60 days before the start of the trip, provided that the security note has been handed over. 2.1 If the customer does not make the down payment and/or the balance payment in accordance with the agreed payment due dates, and if Swan Hellenic Travel is willing and able to properly provide the contractual services, has fulfilled the statutory information obligations and no legal or contractual right of retention exists on your part, Swan Hellenic Travel shall be entitled, in the event of non-performance of the down payment, to withdraw from the package cruise package contract after issuing a reminder setting a deadline and to charge you with the costs of withdrawal in accordance with section 4.2 sentences 2 to 4.4. If the agreed cruise package price has not been paid in full by the due date, Swan Hellenic Travel shall be entitled to terminate the package cruise package contract and to claim damages in the amount of the corresponding cancellation fees, provided that there was not already at that time a package cruise package deficiency justifying cancellation. Swan Hellenic Travel shall be entitled to claim damages for non-performance under the conditions of Cyprus Law or similar national law statutes. If you have booked your trip only 60 days before the start of the trip or later, full payment must be made immediately after receipt of the travel confirmation with security note/ bonding information. With the travel confirmation/ invoice you will receive a security note based on the local law requirements. Swan Hellenic Travel has taken out insolvency bonding according to ACTA Briefing for all cruise only bookings and for all Flight inclusive cruise packages to secure your customer deposits and full payments. The respective local security note securitizes a direct claim against the bonding organization in the event of insolvency of Swan Hellenic Travel and it's address is sent to you with the travel confirmation.

3. CHANGES IN PERFORMANCE

- 3.1 The offers and information on the scope of the contractual travel services on our website correspond to the status at the time of publication. The travel prices are based on the current rates of carriage and exchange rates applicable at the time of the travel advertisement. Until the customer's booking request has been transmitted, however, changes to the services/ the scope of services/ the ship route/ the arrival and departure modalities are possible for objectively justified reasons, which is why Swan Hellenic Travel expressly reserves this right. Swan Hellenic Travel will of course inform the customer of these changes prior to the conclusion of the contract or prior to the submission of its binding contractual offer.
- 3.2 Swan Hellenic Travel expressly reserves the right to deviations and changes of individual travel services from the contractually agreed content of the package travel contract, which become necessary after conclusion of the contract, as far as these changes are insignificant according to EU Package Travel Directive in the Cypriot transition or the respective national law statutes in your country where the travel modules are offered. In the case of cruises, changes to the itinerary are possible at any time, e.g. due to official regulations, special circumstances of shipping traffic, medical emergencies, or if a different itinerary becomes necessary in the interest of the safety of the passengers or for weather reasons or related to national or international

epidemic or pandemic rules. The captain responsible for the ship shall decide on such changes to the itinerary and/or travel and layover times that become necessary after conclusion of the contract.

- 3.3 Any warranty claims shall remain unaffected if the changed services are defective.
- 3.4 Swan Hellenic Travel is obliged to inform the customer of significant changes to the contract immediately after becoming aware of the reason for the change.
- 3.5 If Swan Hellenic Travel is only able to provide the booked trip due to a circumstance occurring after conclusion of the contract under significant change of one of the essential characteristics of the travel service, or only under deviation from a contractual agreement made separately between Swan Hellenic Travel and the customer, Swan Hellenic Travel shall be entitled to offer the customer a corresponding contractual change as new offer before commencement of the trip, or optionally also participation in another trip (substitute trip). In such a case, the customer shall have the right to withdraw from the booked trip without payment of compensation, to demand participation in a substitute trip or to accept the new offer to change the contract within 7 days of receipt of our notification of change with the new offer. Swan Hellenic Travel shall expressly inform the customer of this period in the notification of change. Therefore, the offered new contract shall be deemed accepted if the customer does not inform Swan Hellenic Travel within this set period that he wishes to withdraw from the cruise package contract free of charge or demands participation in a substitute cruise package offered. The new offered service shall replace the service originally owed under the contract. Any warranty claims remain unaffected if the new service is defective.

4. CANCELLATION BY THE CUSTOMER BEFORE COMMENCEMENT OF TRAVEL/ CANCELLATION COSTS

- 4.1 The customer can withdraw from the trip at any time before the start of the trip. Cancellation must be made to Swan Hellenic Travel at the address given below. If the trip was booked through a travel agency, the withdrawal can also be declared to this agency. The customer is recommended to declare the cancellation in writing. The date of receipt by Swan Hellenic Travel or the respective travel agency of the notice of withdrawal shall be decisive for the date of withdrawal.
- 4.2 If the customer withdraws before the start of the trip or does not commence the trip, Swan Hellenic Travel loses its claim to the travel price. Swan Hellenic Travel may instead demand reasonable compensation insofar as Swan Hellenic Travel is not responsible for the cancellation or insofar as extraordinary circumstances do not occur at the place of destination or its immediate vicinity which considerably impair the performance of the journey or the carriage of persons to the place of destination; circumstances are unavoidable if they are not subject to the control of Swan Hellenic Travel and their consequences could not have been avoided even if all reasonable precautions had been taken.
- 4.3 The amount of the compensation shall be determined by the travel price less the value of the expenses saved by Swan Hellenic Travel and less what Swan Hellenic Travel acquires through other use of the travel services, which shall be justified by Swan Hellenic Travel at the customer's request. Swan Hellenic Travel has determined the following compensation level schedule taking into account the period between the notice of withdrawal and the commencement of the journey as well as the expected savings of expenses and the expected acquisition through other use of the travel services. The compensation will be calculated as follows with the respective cancellation scale after the date of receipt of the notice of cancellation:

The following cancellation fees apply to all other trips, with the exception of Special Cruise Itineraries:

- A USD 300/ EUR 300/ GBP 300/ CAD 300.00/ AUD 300/ NZD 300 administrative fee is assessed for all cancellations up to 120 days before cruise departure.
- For cancellations 119-60 days prior to departure: 15% of the cruise package price;
- For cancellations 59-30 days prior to departure: 75% of the cruise package price;
- For cancellations 29 days prior to departure: 100% of the cruise package price

In the case of flight tickets for special price conditions which are booked in addition to the cruise arrangement, 100% of the net ticket price will be charged as cancellation fees in the event of cancellation or no show, taxes and fees on the flight ticket will be refunded.

- 4.4 In any case, the customer is at liberty to prove to Swan Hellenic Travel that Swan Hellenic Travel has incurred no damage at all or substantially less damage than the cancellation level demanded by it.
- 4.5 Swan Hellenic Travel reserves the right to demand a higher, concrete compensation instead of the aforementioned cancellation level if Swan Hellenic Travel proves that it has incurred significantly higher expenses than the applicable cancellation level. In this case, Swan Hellenic Travel shall be obliged to quantify and substantiate the claimed compensation taking into account the saved expenses and any other use of the travel services.
- 4.6 The statutory right of the customer to demand from Swan Hellenic Travel in accordance with EU Package Travel Directive in the Cyprus Transition or the respective national law statutes, in your country where the travel modules are offered that a third party takes over the rights and obligations arising from the package travel contract instead of him shall remain unaffected by the above conditions. Until the start of the trip, i.e. taking into account a reasonable period of time for organisational measures which must be reasonable for Swan Hellenic Travel, the customer may demand that a third party takes his place in the rights and obligations arising from the package travel contract. Swan Hellenic Travel may object to the entry of the third party if the third party does not meet the special travel requirements or if its participation is contrary to statutory regulations or official orders. If a third party enters into the contract, he and the customer shall be jointly and severally liable to Swan Hellenic Travel for the travel price and the additional costs incurred as a result of the entry of the third party, in particular for changing the flight tickets and

fees of the respective service providers.

We charge handling fees of €/GBP/USD 50.00 for the transfer of the contract to a substitute person (plus any fees charged by third parties – in particular airlines).

Declarations of withdrawal, rebooking and changes should be made in writing in the interest of the customer and for reasons of proof.

5. REBOOKING

- 5.1 If a customer wishes to rebook for another trip, he should ask Swan Hellenic Travel to clarify whether the request can be met. There is no legal right to rebooking. This does not apply if the rebooking is necessary because Swan Hellenic Travel has not provided the traveller with any, insufficient or incorrect pre-contractual information in accordance with EU Package Travel Directive in the Cyprus transition or the respective national law statutes, in your country where the travel modules are offered; in this case the rebooking is possible free of charge. Otherwise, rebooking is only possible if the rebooking takes place on a trip that begins within six months of the original departure date and is more expensive. Changes can only be made up to 61 days before departure and will only be permitted once. In contrast, changes that only relate to individual travel services (e.g. hotel or flight) as well as pure name corrections that do not represent a change of person are possible at any time before departure. When registering your trip, Swan Hellenic Travel must have your full name with all first names and surnames and the names of all registered travellers congruent with your valid passport. After Swan Hellenic Travel has confirmed the trip, name changes are only permitted for a handling fee of €/GBP/USD/AUD 50.00 per person. Name changes on scheduled flights are only possible in exceptional cases and on request; Swan Hellenic Travel charges a name change fee in line with the conditions of carriage of and requested by the single airlines per person after the issue of the ticket. Depending on the availability of the airfields, additional surcharges may apply. Pure name corrections in case of incorrect spelling are free of charge. The customer will be charged EUR/GBP/USD/AUD 100.00 for rebookings and changes as well as fees charged by third parties (airlines fees excluded – see above). The advertised conditions apply to rebookings and new bookings; discounts and special conditions for the trip to be rebooked cannot be transferred.
- 5.2 Irrespective of this, each customer is free to withdraw from the originally booked trip under the cancellation conditions under Item 4.3 and to book a new trip. This is mandatory for each rebooking request 60 days or later to departure date.

6. SERVICES NOT USED

If the traveller does not make use of individual travel services which have been duly offered to him for reasons attributable to him (e.g. early return or other compelling reasons), he shall not be entitled to pro rata reimbursement of the travel price. Swan Hellenic Travel will endeavour to have the saved expenses reimbursed by the service providers. This obligation shall not apply if the services concerned are completely insignificant or if reimbursement is contrary to statutory or official provisions.

7. TERMINATION FOR REASONS OF CONDUCT OR UNAVOIDABLE, EXTRAORDINARY CIRCUMSTANCES

Swan Hellenic Travel may terminate the Travel Contract without notice if the Traveller

- a) he has not notified any unfitness to travel known to him before the start of the journey;
- b) knowingly misstated his age;
- c) is, in the judgement of the master or the ship's doctor, incapable of travelling because of illness, infirmity or any other cause i.e. pandemic suspect;
- d) is dependent on company, but travels unaccompanied;
- e) the performance of a voyage, notwithstanding a warning from Swan Hellenic Travel or the ship's management, causes lasting disruption or behaves in a manner contrary to the contract to such an extent that the immediate cancellation of the contract is justified;
- f) booked with false personal or nationality details;
- g) does not appear at the start of the journey within the check-in periods provided, or does not comply with the necessary travel regulations or does not carry the necessary travel documents, so that there is a risk that other passengers may not leave the ship for shore leave.
- h) carries weapons, ammunition, explosive or flammable substances and the like,
- i) consumes or carries drugs or commits criminal offences while travelling. A justified termination also exists in the case of an attempt of the aforementioned actions h) and i).
- j) is on corresponding anti-terror lists of the EU or OFAC.

If Swan Hellenic Travel terminates the contract, Swan Hellenic Travel retains the right to the travel price; however, Swan Hellenic Travel must allow itself to be credited with the value of the saved expenses as well as those benefits which Swan Hellenic Travel obtains from another use of the service not used, including the amounts credited to Swan Hellenic Travel by the service providers.

If Swan Hellenic Travel is prevented from carrying out and fulfilling the cruise package contract prior to commencement of travel due to unavoidable, extraordinary circumstances, Swan Hellenic Travel may declare its withdrawal from the contract to the customer immediately after becoming aware of the reason for withdrawal. Swan Hellenic Travel will then refund the paid travel price within 14 days. Swan Hellenic Travel reserves the right to demand reasonable compensation for travel services rendered or to be rendered.

On board there is an on-board regulation which must be observed and observed by the customer without restriction. The captain is responsible for the ship, the passengers and the crew. Within the framework of the seamanly conduct of the ship, the guarantee of safety, as well as with regard to the observance of the ship rules, the captain has the sole decision-making authority and is thus entitled to expel customers from the ship without compensation.

8. WARRANTY / COOPERATION OBLIGATIONS OF THE TRAVELLER**8.1 Notification of defects;**

If the trip is not carried out in accordance with the contract, the traveller can demand remedy. To the extent that Swan Hellenic Travel was unable to remedy the defect due to a culpable omission of the notice of defects, the Traveller may neither assert claims for a reduction of the purchase price pursuant to EU Package Travel Directive in the Cyprus transition or the respective national law statutes, in your country where the travel modules are offered, nor claims for damages pursuant to damage of tort definition or the respective national law statutes, in your country where the travel modules are offered. Insofar as the notice of defects is not recognisably futile or unreasonable for other reasons, the traveller can immediately notify the cruise package guide at the holiday destination of this or on board the vessel. If a cruise package guide is not available on site, the customer may notify Swan Hellenic Travel of any travel defects at its registered office. The customer will be informed about the availability of the cruise package guide or of Swan Hellenic Travel in the service description, at the latest, however, with the travel documents. The cruise package guide shall be instructed to remedy the situation as far as this is possible. However, he is not authorized to recognize claims of the traveller. The customer can demand a reduction of the travel price corresponding to the reduced performance (i.e. regarding the Cyprus transition or the respective national law statutes, in the country where the travel modules are offered) if, despite his request for remedy (see 8.1), travel services or substitute services accepted by him were not provided in accordance with the contract.

8.2 Deadline prior to termination;

If a customer wishes to terminate the travel contract in accordance with EU Package Travel Directive in the Cyprus transition or the respective national law statutes, in your country where the travel modules are offered, due to a significant deficiency in travel as described in EU Package Travel Directive in the Cyprus transition or the respective national law statutes, in the country where the travel modules are offered, insofar as it is substantial, he must first set Swan Hellenic Travel a reasonable deadline for remedial action. This only does not apply if remedy is refused by Swan Hellenic Travel or if immediate remedy is necessary. If the cruise package is then significantly impaired as a result of the non-contractual provision of services, the customer may terminate the package cruise package contract. If the contract is cancelled thereafter, the customer shall retain the right to repatriation if the contract included repatriation. Swan Hellenic Travel shall bear the additional costs of the return transport. Cases of unforeseeable, extraordinary circumstances which do not affect any travel services provided by Swan Hellenic Travel do not entitle the customer to withdraw from the package travel contract free of charge.

The customer's request for remedy may also be addressed directly to Swan Hellenic Travel: Swan Hellenic Travel Ltd. www.swanhellenic.com, Phone +49 (0)211 1386 6123, E-mail: support@SwanHellenic.com

Authorised recipient and representative: Swan Hellenic Travel Ltd. UK Branch: 60 Petty France, London, SW1H 9EU

Swan Hellenic Travel Ltd. German Branch: Koenigsallee 14, Dusseldorf, 40212

The customer must note that in the case of reports to his travel agent outside his opening hours, a direct transfer to Swan Hellenic Travel for the speedy processing of the remedy request is not guaranteed.

If Swan Hellenic Travel culpably violates obligations arising from the package travel contract, Swan Hellenic Travel shall be obliged to compensate the customer for the resulting damage (based on EU package Travel Directive in the Cyprus transition or the respective national law statutes, in the country where the travel modules are offered). If the journey is thwarted or considerably impaired as a result, the customer may, if he has demanded unsuccessful remedy (see 8.1), also demand reasonable compensation in money for the useless holiday time spent. 8.3 Loss of baggage, damage to baggage and delay of baggage, Swan Hellenic Travel strongly recommends that damage or delays in delivery during air travel be reported immediately to the responsible airline at the airport by means of a Property Irregularity Report (PIR). Airlines usually refuse refunds if the damage report has not been completed. In case of damage to luggage, the damage report must be submitted within seven days and in case of delay within 21 days of delivery. Otherwise, the loss, damage or misrouting of baggage must be reported to the cruise package guide or the local representative of Swan Hellenic Travel. Damage to or loss of luggage during embarkation or disembarkation must be reported immediately. The customer is obliged to notify Swan Hellenic Travel or its agents in writing. If cabin baggage is visibly damaged, the customer must notify Swan Hellenic Travel of the damage immediately, at the latest, however, at the time of disembarkation. In the case of other, externally recognisably damaged luggage, which has been transported by the on-board personnel or stored for the customer, the customer must report the damage as soon as it is handed back to him. If the damage is not externally visible, the report must be made no later than 15 days after disembarkation, handover or the time at which handover was scheduled. The carriage, stowage and handling of the passenger's own luggage on board shall always be at the passenger's own risk. Cabin luggage damage is limited to a maximum liability amount of 2,250 units of account (unit of account is the special drawing right of the International Monetary Fund). The amount shall be converted into Euro/GBP/USD/AUD according to the value of the Euro/GBP/USD/AUD in relation to the Special Drawing Right, per customer and per trip, insofar as damage was neither intentionally nor grossly negligently caused by Swan Hellenic Travel. The limitation of liability shall also apply insofar as Swan Hellenic Travel is responsible for any damage incurred by the customer solely due to the fault of a service provider. In the event of loss of or damage to mobility equipment or other special equipment used by a passenger with reduced mobility, Swan Hellenic Travel shall reimburse the replacement value of the equipment concerned or, if applicable, the repair costs. (i.e. implementation of the EU Regulation 392/2009 or the respective national law statutes, in your country where the travel modules are offered).

9. LIMITATION OF LIABILITY

9.1 The contractual liability of Swan Hellenic Travel for damages that do not result from injury to life, body or health (including liability for injury before, - in addition to, - or after contractual obligations) is limited to three times the cruise package price, in so far as damage to the customer is caused neither intentionally nor by gross negligence or in so far as Swan Hellenic Travel is responsible for any damage incurred by the customer solely due to the fault of a service provider. Any further claims based on international agreements shall remain unaffected by this limitation of liability.

For all claims for damages against Swan Hellenic Travel based on tort, which are not based on intent or gross negligence, the liability for property damage is limited to three times the travel price. These maximum liability sums apply per customer and trip.

Any further claims based on international agreements shall remain unaffected by this limitation of liability.

9.2 If Swan Hellenic Travel is appointed as a contractual shipowner, liability shall be governed by the special international conventions or statutory provisions based on such conventions. Carriage by sea is subject to the liability provisions of the Athens Convention 1974 and the Protocol thereto 2002 as well as the IMO Reservation and the IMO Guidelines for the Implementation of the Athens Convention, which have been implemented in the European Community by Directive 392/2009 for the Carriage of Passengers by Sea. The exact limits of liability can be found here. The provisions of this paragraph shall not apply only if the provisions referred to in point 9.1 lead to a lesser claim on Swan Hellenic Travel. In this context, Swan Hellenic Travel draws attention to the following points in connection with the liability provisions for sea transport:

The liability of Swan Hellenic Travel for the loss of and damage to luggage, mobility aids and other special medical equipment used by customers and/or their fellow passengers with reduced mobility is excluded if the customer and/or fellow passenger does not notify Swan Hellenic Travel of the damage at the latest at the time of disembarkation or at the latest 15 days after disembarkation in the case of damage which is not recognisable. A written notification is not required if both parties have already jointly determined the damage within the period.

c) Swan Hellenic Travel is not liable for damage to or loss of personal equipment or valuables (e.g. money, important documents, precious stones, jewellery, works of art, dentures, photo and film cameras, smartphones, notebooks and tablet PCs including accessories, etc.) due to theft, other loss or other extreme influences, which are not attributable to intentional or grossly negligent conduct on the part of Swan Hellenic Travel, unless they were deposited for safekeeping during transport, e.g. in the reception safe.

9.3 Swan Hellenic Travel is expressly not liable for service disruptions, personal injury and material damage in connection with services which are merely brokered as third-party services (e.g. excursions, sports events, visits to the theatre, exhibitions, transport services to and from the advertised place of departure and destination), all third-party services are clearly and identifiably marked as such and are therefore not part of the travel service to be provided by Swan Hellenic Travel within the scope of the travel contract.

9.4 Swan Hellenic Travel has compiled an extensive shore excursion programme for the customer which in some illustrated cases is offered exclusively by carefully selected local organisers of the respective destination (port). Swan Hellenic Travel is only responsible for arranging these shore excursions, which are not organised, monitored or controlled by Swan Hellenic Travel. The shore excursion programme is provided by local tour operators who work independently of Swan Hellenic Travel. Organizers of shore excursions plan these in accordance with the lay times of the ship. Swan Hellenic Travel carries out the mediation of such external services as a pure service for the customer, but Swan Hellenic Travel is liable for errors in the mediation.

9.5 Air carriage owed as part of a cruise package is subject to the liability provisions of the Montreal Convention of 1999, as amended by Regulation (EC) No 779/2002.

9.6 Swan Hellenic Travel recommends that customers take out travel accident and luggage insurance in their own interest.

10. LIMITATION PERIOD - INFORMATION ON CONSUMER DISPUTE SETTLEMENT

10.1 All contractual claims of the customer shall become statute-barred after two years. The claims for damages under maritime law due to death, damage to body or luggage become statute-barred after two years. Claims arising from tort shall become statute-barred within three years unless they also arise under the provisions of the Cyprus Commercial Code on maritime liability.

10.2 The limitation period begins on the day on which the trip should end according to the contract. If the last day of the period falls on a Sunday, a public holiday recognised by the state at the place of declaration or a Saturday, the next working day shall take the place of such a day.

10.3 If negotiations between the customer and Swan Hellenic Travel concerning the claim or the circumstances justifying the claim are pending, the statute of limitations shall be suspended until the customer or Swan Hellenic Travel refuses to continue the negotiations. The limitation period shall commence at the earliest three months after the end of the suspension.

10.4 Swan Hellenic Travel operates a modern, fast and fair complaints management system. This is attainable for its customers under support@SwanHellenic.com. Swan Hellenic Travel does not take part in a consumer dispute settlement. If a consumer dispute resolution would become obligatory for Swan Hellenic Travel after printing of these trading conditions, Swan Hellenic Travel informs the consumers about it in suitable form. Swan Hellenic Travel refers to the European Online Dispute Resolution Platform for all contracts concluded in electronic legal transactions.

11. OBLIGATIONS TO PROVIDE INFORMATION ON THE IDENTITY OF THE CARRIER UNDERTAKING PERFORMING THE CONTRACT

The EU regulation on informing passengers of the identity of the operating airline obliges Swan Hellenic Travel to inform the customer of the identity of the operating airline of all air transport services to be provided within the scope of the booked journey at the time of booking. If the operating airline has not yet been determined at the time of booking, Swan Hellenic Travel is obliged to inform the customer of the airline or airlines that will probably operate the flight. As soon as Swan Hellenic Travel knows which airline will operate the flight, Swan Hellenic Travel will inform the customer. If the airline named to the customer as the operating airline changes, Swan Hellenic Travel will inform the customer of the change. Swan Hellenic Travel will immediately take all reasonable steps to ensure that the customer is informed of the change as soon as possible. The list of airlines banned from EU operations is available on the following website: http://ec.europa.eu/transport/modes/air/safety/air-ban/index_de.htm

12. PASSPORT, VISA AND HEALTH REQUIREMENTS

12.1 The customer shall be informed about the entry regulations in the cruise brochure, in the travel advertisement, or in the Internet presence, in the online travel advertisements and in the "FAQ" in the travel catalogue or online, prior to the conclusion of the contract. He must observe the necessity of carrying valid identity documents, in particular a valid machine-readable passport (ePassport) and its period of validity. As a general rule, every passenger must carry a valid passport on the respective trip, which must be valid for at least 6 months after the end of the trip. On all journeys which exclusively call at ports in the EU as well as in Norway and Iceland, Schengen area citizens only require an identity card which is valid for at least 6 months after the end of the journey. All children require a children's passport for all trips to ports in the EU, Norway and Iceland up to the age of 14, otherwise a machine-readable passport (ePassport) which is valid for at least 6 months after the end of the trip. The entry of the child in the passport of a parent or guardian is no longer sufficient.

12.2 Swan Hellenic Travel offers the trips in this travel catalogue or the corresponding website in all European EEA countries and worldwide, Swan Hellenic Travel will therefore inform its local customers about the provisions of passport, visa and health regulations for the respective travel countries of the cruise or trip prior to conclusion of the contract and about any changes to such provisions prior to commencement of the trip. This information can also be arranged by the mediating travel agency due to its own legal obligation (i.e. based on the Cyprus transition or the respective national law statutes, in the country where the travel modules are offered) and should be documented by this. Swan Hellenic Travel provides further information via its website and in the booking systems by accessing suitable databases.

12.3 The customer himself is responsible for retrieving the further information suitable for him until departure, obtaining and carrying the travel documents required by the authorities, any necessary vaccinations and compliance with customs and foreign exchange regulations. This is also valid for travel ban and special authorities request regarding pandemic suspect or sudden border closure for traveller from distinctive countries with a high pandemic risk level. Any disadvantages resulting from non-compliance with these regulations, e.g. the payment of withdrawal costs or official fines, shall be borne by the customer. This shall not apply if Swan Hellenic Travel or the travel agent has failed to provide adequate or incorrect information.

12.4 Swan Hellenic Travel shall not be liable for the timely issue and receipt of necessary visas by the respective diplomatic representation if the customer has commissioned Swan Hellenic Travel with the procurement, unless Swan Hellenic Travel has culpably breached its own obligations.

13. DATA PROTECTION / RIGHT TO OBJECT TO ADVERTISING

The personal data provided by the customer to Swan Hellenic Travel will be electronically processed, stored and used to the extent necessary for the execution of the contract, for the processing of the trip, for customer support or for the fulfilment of statutory provisions. In addition, if the customer has agreed to this, the data will be used for market research purposes and to send current information and offers. Swan Hellenic Travel processes the booking order on the basis of the GDPR, taking into account the applicable data protection regulations. The customer has the right to object to this further use of data at any time or to revoke the consent given for the aforementioned purposes at any time. For this purpose, the customer shall contact Swan Hellenic Travel, data protection officer, address Cyprus, by e-mail to dpo@SwanHellenic.com or by post to Swan Hellenic Travel. The customer can find more details in the Swan Hellenic Travel DATA PROTECTION DECLARATION.

14. CHOICE OF LAW / PLACE OF JURISDICTION / GENERAL CLAUSE

14.1 Unless otherwise stipulated for the benefit of the customer in regulations or international conventions which are mandatory for the travel contract, the entire contractual and legal relationship between Swan Hellenic Travel and the customer shall be governed exclusively by Cyprus law.

14.2 Complaints against Swan Hellenic Travel shall be brought before the competent local and factual courts for the registered office of Swan Hellenic Travel Ltd. - Cyprus, unless mandatory statutory provisions or international agreements stipulate otherwise.

14.3 The place of jurisdiction for actions brought by Swan Hellenic Travel against customers or contractual partners of the travel contract who are merchants, legal entities under public or private law or persons who have their place of residence or habitual abode abroad, or whose place of residence or habitual abode is unknown at the time the action is brought, shall be the registered office of Swan Hellenic Travel in Nicosia - Cyprus.

14.4 The invalidity of individual provisions of the travel contract and/or these travel conditions shall not result in the invalidity of the entire travel contract or the entire travel conditions.

TOUR OPERATOR:

Tour Operator: Swan Hellenic Travel Ltd.: Themistokli Dervi 20, Flat/Office 301, 1066 Nicosia, Cyprus www.SwanHellenic.com

Authorised recipient and representative:

Swan Hellenic Travel Ltd. UK Branch: 60 Petty France, London, SW1H 9EU support@SwanHellenic.com

Swan Hellenic Travel Ltd. German Branch: Koenigsallee 14, Dusseldorf, 40212 support@SwanHellenic.com

Insolvency bonding:

For cruise packages ACTA: 24 Stasikratous Street, 1065 Nicosia, Cyprus

The main rights of customers/travellers under Directive (EU) 2015/2302 are set out below:

Form for informing the traveller of a cruise package in accordance with EU Package Travel Directive

The combination of travel services offered to you is a cruise package within the meaning of Directive (EU) 2015/2302.

You can therefore take advantage of all the EU rights that apply to package travel. Swan Hellenic Travel Ltd. is fully responsible for the proper execution of the entire package.

In addition, Swan Hellenic Travel Cruises Ltd. has the statutory security to repay your payments and, if the transport is included in the package, to secure your return transport in the event of its insolvency.

Main rights under Directive (EU) 2015/2302:

- Passengers will receive all essential information about the package prior to the conclusion of the package travel contract.

- At least one contractor is always liable for the proper provision of all travel services included in the contract.

- Travellers receive an emergency telephone number or contact details of a contact point where they can contact the tour operator or travel agency.

- Travellers may transfer the package to another person within a reasonable time and possibly at additional cost.

- The price of the package may only be increased if certain costs (e.g. fuel prices) increase and if this is expressly provided for in the contract, and in any event no later than 20 days before the package commences. If the price increase exceeds 8% of the package price, the traveller may withdraw from the contract. If a tour operator reserves the right to a price increase, the traveller has the right to a price reduction if the corresponding costs are reduced.

- Travellers may withdraw from the contract without paying a cancellation fee and will receive full reimbursement of all payments if any of the essential elements of the package other than the price is substantially changed. If the operator responsible for the package cancels the package before its commencement, travellers shall be entitled to reimbursement and, in certain circumstances, compensation.

- In exceptional circumstances, travellers may withdraw from the contract before the package starts without paying a cancellation fee, for example if there are serious safety problems at destination which are likely to affect the package.

- In addition, travellers may withdraw from the contract at any time before the start of the package against payment of a reasonable and justifiable cancellation fee.

- If after the start of the cruise package essential components of the cruise package cannot be carried out as agreed, the traveller shall be offered appropriate other precautions at no additional cost. The traveller can withdraw from the contract without paying a cancellation fee (in the Federal Republic of Germany this right is called "termination") if services are not provided in accordance with the contract and this has considerable effects on the provision of the contractual cruise package services and the tour operator fails to remedy the situation.

- The traveller is entitled to a price reduction and/or compensation if the travel services are not provided or not provided properly.

- The tour operator will assist the traveller if he is in difficulties. In the event of the insolvency of the tour operator or, in some Member States, of the travel agent, payments will be refunded. If the insolvency of the tour operator or, if relevant, of the travel agent occurs after the package has commenced and the carriage forms part of the package, the return of the passengers shall be guaranteed. Swan Hellenic Travel Ltd. has concluded insolvency bonding with ACTA: 24 Stasikratous Street, 1065 Nicosia, Cyprus

Thanks for embracing
our travel philosophy